



**SUNBELT**  
RENTALS®



Approved  
Training Centre

# IPAF TRAINING COURSES

---







# CONTENTS

What is IPAF?	4
IPAF ePAL	5
Which category should I be trained on?	6
IPAF Harness Training Guide	7
IPAF On-site Requirements	8
IPAF Harness Awareness (HA) e-learning	11
IPAF Harness Awareness and User (HA/HU)	12
IPAF Harness Inspector (HI)	13
IPAF Harness Awareness, User and Inspector (HA/HU/HI)	14
IPAF Push Around Vertical (PAV) Operator	15
IPAF Single Static Boom (1b) Operator	16
IPAF Single Mobile Vertical (3a) Operator	17
IPAF Single Mobile Boom (3b) Operator	18
IPAF Dual Mobile Vertical (3a) and Mobile Boom (3b) Operator	19
IPAF Dual Mobile Vertical (3a) and Static Boom (1b) Operator	20
IPAF Dual Static Boom (1b) and Mobile Boom (3b) Operator	21
IPAF Triple Static Boom (1b), Mobile Boom (3b) and Mobile Vertical (3a) Operator	22
IPAF PAL+	23
IPAF MEWPS for Managers	24
IPAF Safe Loading and Unloading	25
IPAF Hoist Operator	26
IPAF Demonstrator	27

To speak to a member of the team, contact us at:  
0300 373 3373  
[trainingservices@sunbeltrentals.co.uk](mailto:trainingservices@sunbeltrentals.co.uk)



# What is IPAF?

## International Powered Access Federation (IPAF)

The International Powered Access Federation (IPAF) training programme is globally recognised, developed by leading industry professionals and available in multiple languages.

The comprehensive range of classroom and eLearning courses covers mobile elevating work platforms (MEWPs), including self-propelled boom and scissor lifts, vehicle and trailer mounted platforms, push around machines, mast climbing work platforms (MCWPs) and construction hoists.

Courses are aimed at operators, service technicians, delivery drivers, managers/supervisors, demonstrators, installers and instructors.

IPAF training courses help you keep employees safe and employers legal.

IPAF states that from 2016-2020, the most common causes of fatal incidents when working at height included:

- Falls from height made up **23%** of fatalities
- **23%** of fatalities involved **electrocutions**
- **Entrapments** formed **19%** of fatalities
- The **overturn of equipment** caused **12%** of fatalities
- **6%** of fatalities were caused by **being struck by a machine or vehicle** and **5%** of fatalities occurred through **objects falling from height**

Many of these fatalities could have been prevented had the use of powered access equipment been better planned, making it crucial to provide training to all employees working at height.

# IPAF ePAL

IPAF's ePAL app is your new digital wallet to store and share your IPAF powered access licences and qualifications.

Easily record your operating experience on powered access machines through the digital logbook, giving you an overview of the time spent operating multiple machines.

Have the latest powered access safety and best practice tips and advice in your pocket, and get access to your operator safety guide or site safety guide based on your linked licences.



Operators can download the app for free to Apple iOS and Android devices and use it to view and access their digital PAL Cards, logbooks and IPAF safety guides. Our Trainers will talk you through this process at the start of your IPAF course.

Sunbelt Rentals uses the IPAF Digital PAL Card Licence Application (ePAL) to process all IPAF certification.

- The IPAF Digital PAL Card Licence Application (ePAL) is a mandatory item when making a booking.
- IPAF Physical PAL Card Licence Application (Printed PAL Card) – If required add the item "Printed PAL Card and Certificate" to your basket.

Digital wallet for IPAF licences & qualifications

- Available to both new & existing PAL Card holders
- Apple iOS & Android apps
- Free to download
- Digital logbook for operators to record experience
- Safety updates
- Best practice tips & advice

### What are the benefits?

ePAL is highly convenient for operators and their employers – licences, qualifications and practical experience are easily shared from the operator's phone giving peace-of-mind in light of safety and security.

Digital PAL Cards are also fraud smart and benefit from the extra security provided by a mobile phone's log-in measures. ePAL provides operators with access to the latest in safety information and best practice to help them be safer in their workplace.

# Which category should I be trained on?

## Powered access refers to:

**“Equipment that is designed to lift personnel, tools and materials to work safely at height”.**

MEWPs are also sometimes referred to as aerial work platforms, cherry pickers, scissor lifts, booms or mast lifts and are categorised by type as follows:

### Static Boom (1b, 1b+)

Self-propelled booms (outriggers), trailers/push-arounds, vehicle-mounted platforms

### Mobile Vertical (3a, 3a+)

Scissor lifts, vertical personnel platforms (mobile)

### Mobile Boom (3b, 3b+)

Self-propelled booms

### Push Around Vertical (PAV)

Static push around platforms

### Specialist machines (SPECIAL)

Specialist machines, i.e. Road Rail Vehicle (RRV)

### MEWPS for Managers (MM)

For those who plan, supervise or manage work at height with MEWPS

### Hoist (TPH, GH, PH)

Transport platform hoists, goods hoists, passenger hoists

### Demonstrator

Training a demonstrator to familiarise operators with their responsibilities and to demonstrate pre-operational and safe operating procedures, and the limitations of MEWPS

### Safe Loading and Unloading (LOAD)

For anyone loading or unloading heavy plant machinery including MEWPS, dumpers, excavators or telehandlers etc

The “+” symbol means that the operator has successfully completed the PAL+ course, which covers additional practical training and testing in challenging work environments on the machine category indicated.

# IPAF Harness Training Guide



## IPAF Harness Awareness (HA)

The theory section of the previous IPAF Harness qualification.

Duration: **3 hours**

- Provides essential knowledge on Harness safety.
- This course does not qualify you to use a Harness.

Delivery method: **E-learning or classroom (when combined with the Harness User course)**



## IPAF Harness User (HU)

The practical assessment section of the previous IPAF Harness qualification.

Duration: **Minimum 20 minutes**

- Assesses your ability to use a Harness safely.
- You must hold a valid Harness Awareness certificate in order to attend.

Delivery method: **In-person assessment or Classroom (when combined with a Harness Awareness course)**



## IPAF Harness Inspector (HI)

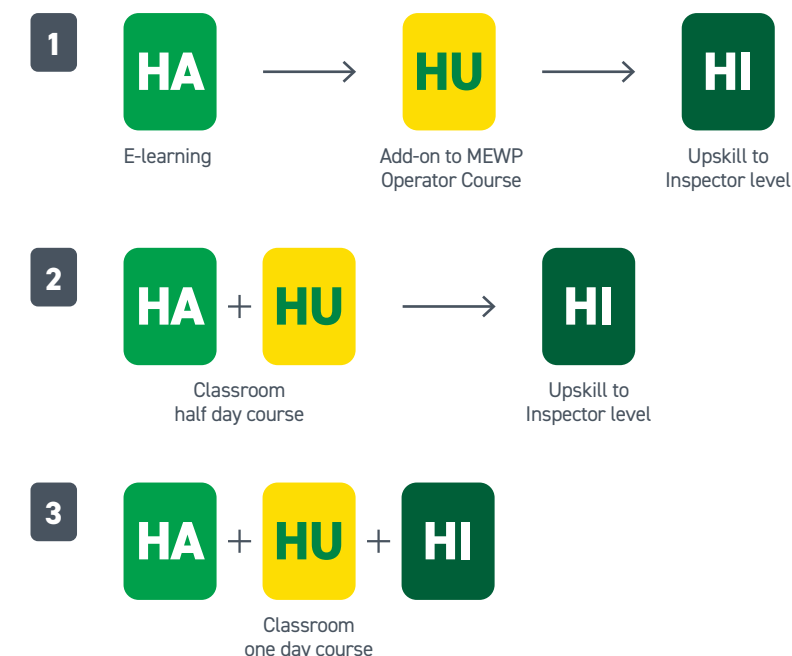
Additional theory + practical training to Inspector level.

Duration: **3 hours**

- Enables you to conduct statutory Harness inspections on behalf of your organisation.
- You must hold a valid Harness Awareness and Harness User certificate in order to attend.

Delivery method: **Classroom**

## Learner Pathways:



## What do I need to do if I hold the previous IPAF Harness qualification?

Current IPAF Harness qualifications will remain valid until their expiry, at which point you will need to attend the new course(s) if you wish to renew your qualification.

# IPAF On-site Requirements

On-site training comes with a wide range of benefits which include:

- Reduction in travel - allows delegates to stay at their site or premises.
- Reduction in company downtime - delegates can return to work immediately after training.
- Flexible to your schedule - your training can fit around employee shift patterns.
- Specific training to your site - our trainers can provide a tailored experience and delegates can ask questions relevant to their workplace.
- Cost reduction - lessen costs to your company by removing travel and reducing time away from work for your employees.

In order to discuss your on-site training needs please contact our team today.

Unless specifically requested all training courses conducted at a customer's own site are done so using the customer's own equipment. See additional pages for equipment specification.

## Mandatory Requirements

Action	Yes	Additional Information
1 <b>Trainer I.D:</b> Are any of the following required for on-site access? Passport      D/License      Site Card      Other      (please specify)		
2 <b>Site induction:</b> Completed prior to training including First Aid provision & Emergency Fire procedures (confirm if trainer is required to carry this out). Are there any site specific requirements the trainer must be aware of?		
3 <b>Risk assessment and method statement:</b> As required will need to be carried out prior to the course date.		
4 <b>PPE:</b> To be supplied to ALL delegates on site: <i>Hard Hat. Hi-vis Jacket. Safety Boots. Warm clothing. Gloves.</i> Please state any additional trainer PPE requirements.		
5 <b>Parking:</b> Is parking available on-site for the trainer? If not please state the location of the nearest car park or parking facility.		

## Facilities

Action	Yes	Additional Information
1 Is the training room <b>15m<sup>2</sup> or 2.5m<sup>2</sup></b> per person, whichever is greater and for the exclusive use of the delegates? <i>E.g. 5m (length) x 3m (width)</i>		
2 Is there adequate seating and desk space for each candidate?		
3 Is there a separate table for trainer and projector, laptop and screen or wall suitable for projection and 240 volt power supply?		
4 Adequate welfare facilities - toilets, canteen, refreshments?		

## Practical Training Area

Action	Yes	Additional Information
1 <b>Training area:</b> The area must be for the exclusive use of training cordoned off from pedestrian / vehicular traffic with suitable control measures, be free of obstacles, debris and overhead hazards and be in a fit state for normal operations.		
2 <b>Assessment:</b> The training area must be available for the time required to complete the practical assessments without interruption or disturbance.		
3 <b>Practical Assessment:</b> There must be a minimum 75% of the machine working envelope with a suitable workface target at 75% of the machine height.		

## Equipment

Action	Yes	Additional Information
1 <b>MEWP:</b> The MEWP must be in a serviceable and fit condition and comply to EN280 and have evidence of a current (LOLER) Thorough Examination Certificate.		
2 <b>Condition:</b> The MEWP needs to have been checked by a competent person to ensure it is in a serviceable and fit condition.		
3 <b>Control measures:</b> MEWP must be for the sole use of training, fully charged / fuelled with keys & manufacturer's instruction manual available.		
4 <b>Additional PPE Requirements:</b> Hard hat with chin strap, full body harness with full restraint lanyard.		Harness Inspection Date

<b>MEWP Category:</b>	1b	3a	3b	PAV	Special	Harness
-----------------------	----	----	----	-----	---------	---------

MEWP Make & Model:	Thorough Examination in Date?	YES
MEWP Make & Model:	Thorough Examination in Date?	
MEWP Make & Model:	Thorough Examination in Date?	

\*All notes above are subject to a dynamic site risk assessment carried out by the trainer with particular reference to the ground conditions and practical training area. Whilst we endeavour to work with sites to ensure that training is carried out, if the area of operations is deemed unsuitable by the trainer then we cannot be held responsible for the cancellation / postponement of the event at the customer's cost.



# IPAF Harness Awareness (HA) e-learning



## Aims & Objectives

Awareness and understanding of how to correctly use a harness is critical to the safe operation of boom-type MEWPs. According to data gathered by IPAF, falls from a MEWP platform are one of the major causes of injury or fatality associated with using MEWPs.

This course is suitable first step for those who need to use or wear a harness. Once completed the practical Harness User (HU) assessment can be carried out as part of an operator course involving the use of a boom-type machine.

The course is also suitable for candidates who do not need to personally use or wear a harness.

## Agenda

- Selection of harnesses and lanyards for use in MEWPS
- Manage and supervise the use of harnesses and lanyards for use in MEWPS
- Create safe systems of work for harness and lanyard use in MEWPS
- Test

## Candidate Information

Candidates operating boom-type MEWPs should first take the Harness Awareness (HA) Course (theory training & test) which can be completed remotely as eLearning followed by the IPAF Harness User (HU) course which can be incorporated into a relevant IPAF Operator course. Candidates will be required to bring their certificate number from this course to provide to their trainer to enable the Harness User (HU) assessment to take place.

This course is also suitable for candidates who do not need to personally use or wear a harness and typically includes managers, planners, safety professionals and supervisors.

Candidates who are responsible for inspecting their company's personal fall protection equipment (PFPE) and maintaining inspection records (including those required by law), should first take the HA and HU courses, followed by the HI Course.

## Certification & Grants

Upon successful completion of the course, candidates will receive a digital IPAF Powered Access Licence (PAL Card) accessible via the IPAF ePAL app for an IPAF HA qualification valid for 5 years.

The IPAF ePAL app is free to download on Apple iOS and Android devices. The app can be used to view and access an operator's digital PAL card, logbook and IPAF safety guides. Our Trainers will talk you through this process at the start of your IPAF course. If a physical PAL card and certificate are required, these must be arranged with the training department before the course start date. An additional charge applies.

Companies who are CITB registered and meet their grant scheme eligibility requirements may be able to claim for a short course duration grant. Please contact us for further information.



# IPAF Harness Awareness and User (HA/HU)



## Aims & Objectives

Awareness and understanding of how to correctly use a harness is critical to the safe operation of boom-type MEWPs. According to data gathered by IPAF, falls from a MEWP platform are one of the major causes of injury or fatality associated with using MEWPs.

The IPAF Harness Awareness and User course is essential for candidates operating boom-type MEWPS and those wishing to go and complete the IPAF Harness Inspection course.

## Agenda

- Selection of harnesses and lanyards for use in MEWPS
- Manage and supervise the use of harnesses and lanyards for use in MEWPS
- Create safe systems of work for harness and lanyard use in MEWPS
- Test

Candidates successfully passing the Harness Awareness test will go on to undertake the Harness User practical assessment:

- Pre-use check of a harness and lanyard
- Fitting and adjustment of a harness and lanyard for use in a MEWP
- Attaching to the correct anchor point in a MEWP
- and adjustment of the lanyard to provide effective restraint

## Candidate Information

The IPAF Harness Awareness and User course is essential for candidates operating boom type MEWPS.

Candidates who are responsible for inspecting their company's personal fall protection equipment (PFPE) and maintaining inspection records (including those required by law), should first take the HA and HU courses, followed by the HI Course.

## Certification & Grants

Upon successful completion of the course, candidates will receive a digital IPAF Powered Access Licence (PAL Card) accessible via the IPAF ePAL app for an IPAF HA & HU qualification valid for 5 years.

The IPAF ePAL app is free to download on Apple iOS and Android devices. The app can be used to view and access an operator's digital PAL card, logbook and IPAF safety guides. Our Trainers will talk you through this process at the start of your IPAF course.

If a physical PAL card and certificate are required, these must be arranged with the training department before the course start date. An additional charge applies.

Companies that are CITB registered and meet their grant scheme eligibility requirements may be able to claim a short course duration grant. Please contact us for further information.

# IPAF Harness Inspector (HI)



## Aims & Objectives

The IPAF Harness Inspection course is specifically for those candidates who are responsible for inspecting their company's personal fall protection equipment (PFPE) and maintaining inspection records (including those required by law).

## Agenda

- Introduction
- Statutory Inspections
- Types of Detailed Inspections
- Longevity and Obsolescence
- Common Types of Damage and Criteria for Failure
- Inspection Report
- Harness and Lanyard Inspection
- Completion of associated documentation
- Theory Test
- Individual Practical Assessment

## Candidate Information

Candidates taking this course must have previously passed the IPAF Harness Awareness (HA) and Harness User (HU) courses.

This course is ideal for candidates who are responsible for inspecting their company's personal fall protection equipment (PFPE) and maintaining inspection records (including those required by law). Candidates are mostly company harness/safety inspectors.

## Certification & Grants

Upon successful completion of the course, candidates will receive a digital IPAF Powered Access Licence (PAL Card) accessible via the IPAF ePAL app for an IPAF HI qualification valid for 5 years.

The IPAF ePAL app is free to download on Apple iOS and Android devices. The app can be used to view and access an operator's digital PAL card, logbook and IPAF safety guides. Our Trainers will talk you through this process at the start of your IPAF course.

If a physical PAL card and certificate are required, these must be arranged with the training department before the course start date. An additional charge applies.

Companies that are CITB registered and meet their grant scheme eligibility requirements may be able to claim a short course duration grant. Please contact us for further information.



# IPAF Harness Awareness, User and Inspector (HA/HU/HI)

## Aims & Objectives

Awareness and understanding of how to correctly use a harness is critical to the safe operation of boom-type MEWPs. According to data gathered by IPAF, falls from a MEWP platform are one of the major causes of injury or fatality associated with using MEWPs.

The IPAF Harness Awareness, User and Inspection course is specifically for those candidates who are responsible for inspecting their company's personal fall protection equipment (PFPE) and maintaining inspection records (including those required by law).

## Agenda

- Selection of harnesses and lanyards for use in MEWPS
- Manage and supervise the use of harnesses and lanyards for use in MEWPS
- Create safe systems of work for harness and lanyard use in MEWPS
- Test

Candidates successfully passing the Harness Awareness test will go on to undertake the Harness User practical assessment:

- Pre-use check of a harness and lanyard
- Fitting and adjustment of a harness and lanyard for use in a MEWP
- Attaching to the correct anchor point in a MEWP and adjustment of the lanyard to provide effective restraint

Once completed candidates will move onto Harness Inspection including:

- Introduction
- Statutory Inspections
- Types of Detailed Inspections
- Longevity and Obsolescence
- Common Types of Damage and Criteria for Failure
- Inspection Report
- Harness and Lanyard Inspection
- Completion of associated documentation
- Theory Test
- Individual Practical Assessment

## Candidate Information

This course is ideal for candidates who are responsible for inspecting their company's personal fall protection equipment (PFPE) and maintaining inspection records (including those required by law). Candidates are mostly company harness/safety inspectors.

## Certification & Grants

Upon successful completion of the course, candidates will receive a digital IPAF Powered Access Licence (PAL Card) accessible via the IPAF ePAL app for an IPAF HI qualification valid for 5 years.

The IPAF ePAL app is free to download on Apple iOS and Android devices. The app can be used to view and access an operator's digital PAL card, logbook and IPAF safety guides. Our trainers will talk you through this process at the start of your IPAF course.

If a physical PAL card and certificate are required, these must be arranged with the training department before the course start date. An additional charge applies.

Companies that are CITB registered and meet their grant scheme eligibility requirements may be able to claim a short course duration grant. Please contact us for further information.

# IPAF Push Around Vertical (PAV) Operator



## Aims & Objectives

This IPAF Push Around Vertical (PAV) operator course instructs a candidate to prepare and safely operate aerial work platforms.

IPAF's MEWP Operator Training is certified by TÜV as conforming to the international standard ISO 18878 Mobile elevating work platforms – Operator (driver) training. The course will consist of classroom based tutorials, demonstrations and practical and written tests.

## Agenda

- Introduction and pre-course theory test
- MEWP regulations and guidance
- Machine types and use
- Structural parts
- Familiarisation and pre-use inspection
- Safe operating methods and hazards
- Written theory test

Candidates successfully passing the written theory test will go on to undertake:

- Practical training
- Practical assessment

## Candidate Information

This course is for candidates who use aerial work platforms with no mechanical drive and are physically pushed around.

## Certification & Grants

Upon successful completion of the course, candidates will receive a digital IPAF Powered Access Licence (PAL Card) accessible via the IPAF ePAL app for an IPAF PAV qualification valid for 5 years.

The IPAF ePAL app is free to download on Apple iOS and Android devices. The app can be used to view and access an operator's digital PAL card, logbook and IPAF safety guides. Our trainers will talk you through this process at the start of your IPAF course.

If a physical PAL card and certificate are required, these must be arranged with the training department before the course start date. An additional charge applies.

Companies that are CITB registered and meet their grant scheme eligibility requirements may be able to claim a short course duration grant. Please contact us for further information.



# IPAF Single Static Boom (1b) Operator



## Aims & Objectives

This IPAF Single Static Boom (1b) operator course instructs a candidate to prepare and safely operate static boom lifts such as tracked, trailer, truck or van mounted.

IPAF's MEWP Operator Training is certified by TÜV as conforming to the international standard ISO 18878 Mobile elevating work platforms – Operator (driver) training. The course will consist of classroom based tutorials, demonstrations and practical and written tests.

## Agenda

- Introduction and pre-course theory test
- MEWP regulations and guidance
- Machine types and use
- Structural parts
- Familiarisation and pre-use inspection
- Safe operating methods and hazards
- Written theory test

Candidates successfully passing the written theory test will go on to undertake:

- Practical training
- Practical assessment

## Candidate Information

Candidates who use static boom lifts such as tracked, trailer, truck or van mounted.

## Certification & Grants

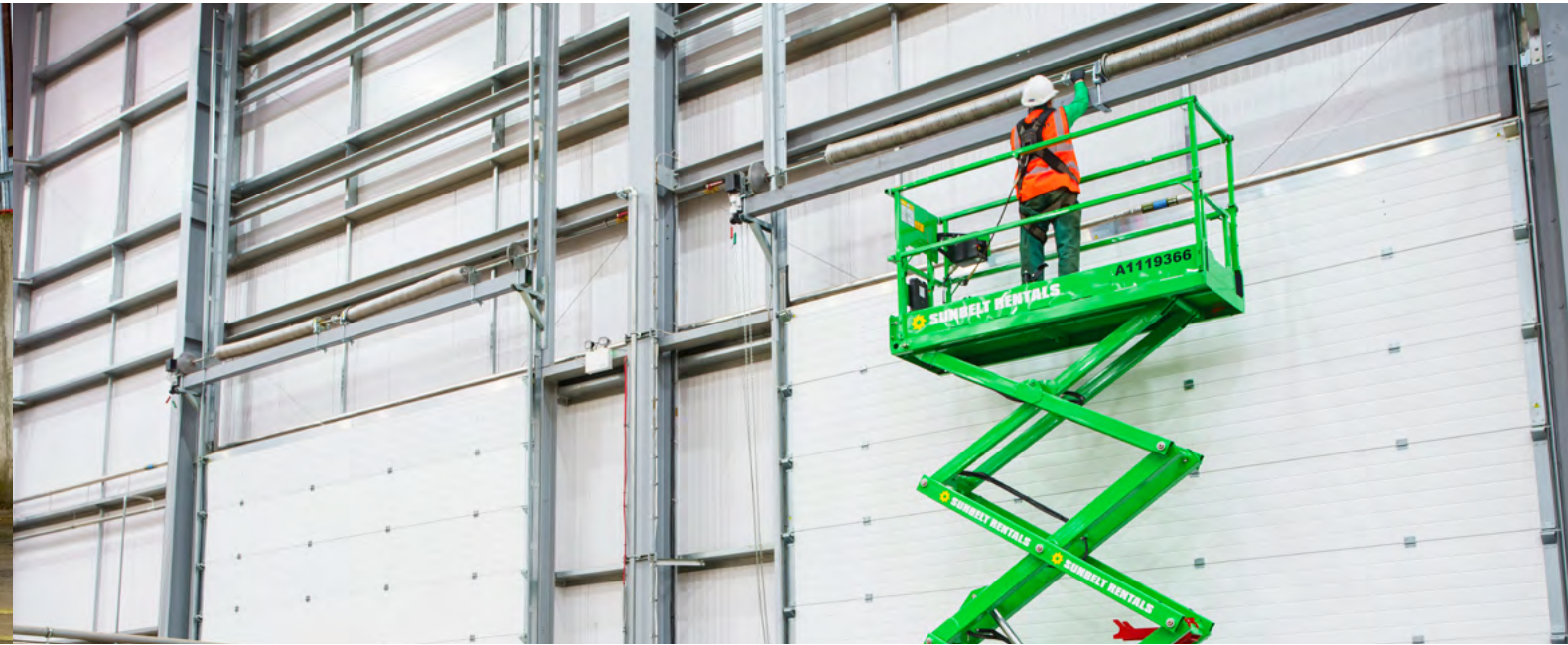
Upon successful completion of the course, candidates will receive a digital IPAF Powered Access Licence (PAL Card) accessible via the IPAF ePAL app for an IPAF 1b qualification valid for 5 years.

The IPAF ePAL app is free to download on Apple iOS and Android devices. Candidates can use the app to view and access an operator's digital PAL card, logbook, and IPAF safety guides. Our trainers will talk you through this process at the start of your IPAF course.

If a physical PAL card and certificate are required, these must be arranged with the training department before the course start date. An additional charge applies.

Companies that are CITB registered and meet their grant scheme eligibility requirements may be able to claim a short course duration grant. Please contact us for further information.

# IPAF Single Mobile Vertical (3a) Operator



## Aims & Objectives

This IPAF Single Mobile Vertical (3a) operator course instructs a candidate to prepare and safely operate mobile scissor lifts or mobile vertical personnel platforms.

IPAF's MEWP Operator Training is certified by TÜV as conforming to the international standard ISO 18878 Mobile elevating work platforms – Operator (driver) training. The course will consist of classroom based tutorials, demonstrations and practical and written tests.

## Agenda

- Introduction and pre-course theory test
- MEWP regulations and guidance
- Machine types and use
- Structural parts
- Familiarisation and pre-use inspection
- Safe operating methods and hazards
- Written theory test

Candidates successfully passing the written theory test will go on to undertake:

- Practical training
- Practical assessment

## Candidate Information

Candidates who use mobile scissor lifts or mobile vertical personnel platforms.

## Certification & Grants

Upon successful completion of the course, candidates will receive a digital IPAF Powered Access Licence (PAL Card) accessible via the IPAF ePAL app for an IPAF 3a qualification valid for 5 years.

The IPAF ePAL app is free to download on Apple iOS and Android devices. The app can be used to view and access an operator's digital PAL card, logbook and IPAF safety guides. Our Trainers will talk you through this process at the start of your IPAF course.

If a physical PAL card and certificate are required, these must be arranged with the training department before the course start date. An additional charge applies.

Companies that are CITB registered and meet their grant scheme eligibility requirements may be able to claim a short course duration grant. Please contact us for further information.



# IPAF Single Mobile Boom (3b) Operator

# IPAF Dual Mobile Vertical (3a) and Mobile Boom (3b) Operator



## Aims & Objectives

This IPAF Single Mobile Boom (3b) operator course instructs a candidate to prepare and safely operate self-propelled (mobile) articulated boom lifts, often referred to as cherry pickers.

IPAF's MEWP Operator Training is certified by TÜV as conforming to the international standard ISO 18878 Mobile elevating work platforms – Operator (driver) training. The course will consist of classroom based tutorials, demonstrations and practical and written tests.

## Agenda

- Introduction and pre-course theory test
- MEWP regulations and guidance
- Machine types and use
- Structural parts
- Familiarisation and pre-use inspection
- Safe operating methods and hazards
- Written theory test

Candidates successfully passing the written theory test will go on to undertake:

- Practical training
- Practical assessment

## Candidate Information

Candidates who use self-propelled (mobile) articulated boom lifts or cherry pickers.

## Certification & Grants

Upon successful completion of the course, candidates will receive a digital IPAF Powered Access Licence (PAL Card) accessible via the IPAF ePAL app for an IPAF 3b qualification valid for 5 years.

The IPAF ePAL app is free to download on Apple iOS and Android devices. The app can be used to view and access an operator's digital PAL card, logbook and IPAF safety guides. Our Trainers will talk you through this process at the start of your IPAF course.

If a physical PAL card and certificate are required, these must be arranged with the training department before the course start date. An additional charge applies.

Companies that are CITB registered and meet their grant scheme eligibility requirements may be able to claim a short course duration grant. Please contact us for further information.

## Aims & Objectives

This IPAF Dual Mobile Vertical (3a) and Mobile Boom (3b) operator course instructs a candidate to prepare and safely operate mobile scissor lifts or mobile vertical personnel platforms and self-propelled (mobile) articulated boom lifts, often referred to as cherry pickers.

IPAF's MEWP Operator Training is certified by TÜV as conforming to the international standard ISO 18878 Mobile elevating work platforms – Operator (driver) training. The course will consist of classroom based tutorials, demonstrations and practical and written tests.

## Agenda

- Introduction and pre-course theory test
- MEWP regulations and guidance
- Machine types and use
- Structural parts
- Familiarisation and pre-use inspection
- Safe operating methods and hazards
- Written theory test

Candidates successfully passing the written theory test will go on to undertake:

- Practical training
- Practical assessment

## Candidate Information

Candidates who use mobile scissor lifts or mobile vertical personnel platforms and self-propelled (mobile) articulated boom lifts or cherry pickers.

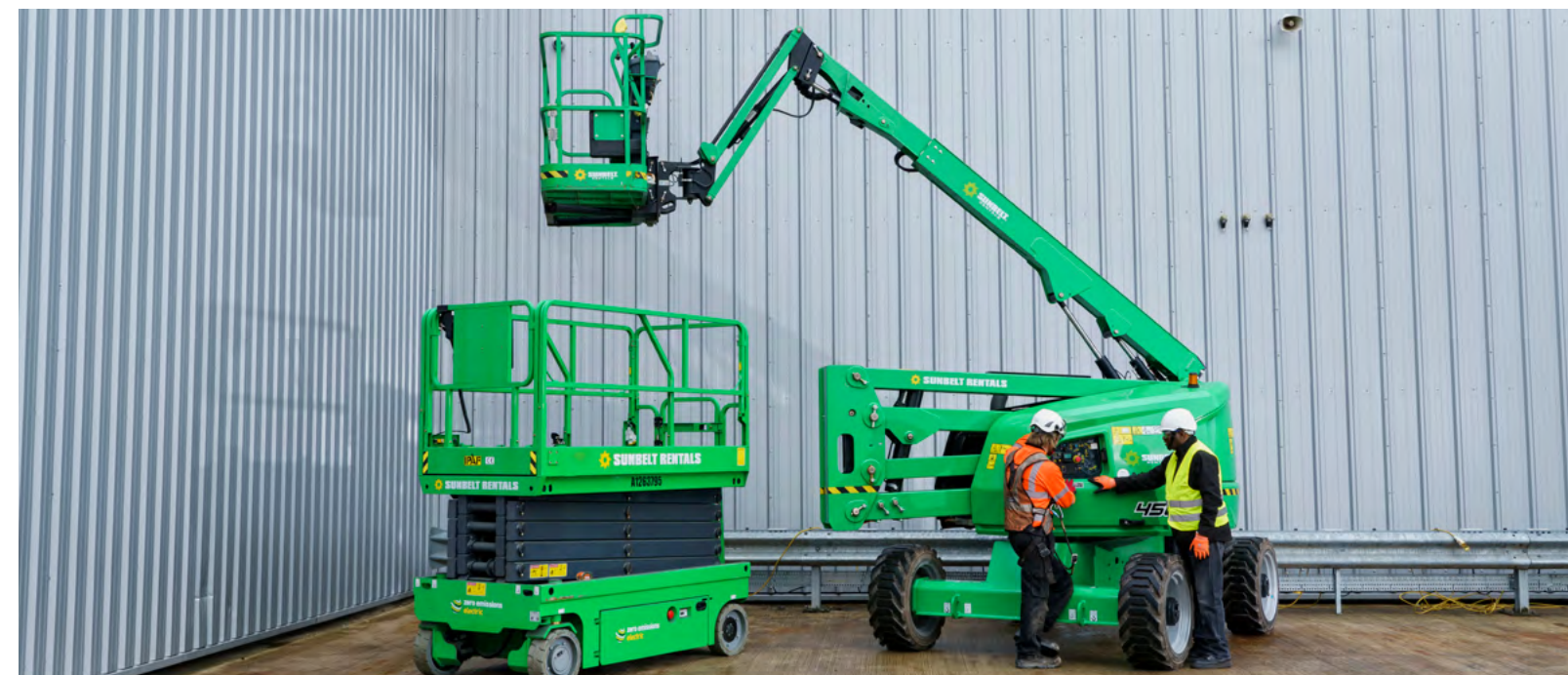
## Certification & Grants

Upon successful completion of the course, candidates will receive a digital IPAF Powered Access Licence (PAL Card) accessible via the IPAF ePAL app for an IPAF 3a & 3b qualification valid for 5 years.

The IPAF ePAL app is free to download on Apple iOS and Android devices. The app can be used to view and access an operator's digital PAL card, logbook and IPAF safety guides. Our Trainers will talk you through this process at the start of your IPAF course.

If a physical PAL card and certificate are required, these must be arranged with the training department before the course start date. An additional charge applies.

Companies that are CITB registered and meet their grant scheme eligibility requirements may be able to claim a short course duration grant. Please contact us for further information.





# IPAF Dual Mobile Vertical (3a) and Static Boom (1b) Operator

## Aims & Objectives

This IPAF Dual Mobile Vertical (3a) and Static Boom (1b) operator course instructs a candidate to prepare and safely operate mobile scissor lifts or mobile vertical personnel platforms and static boom lifts such as tracked, trailer, truck or van mounted.

IPAF's MEWP Operator Training is certified by TÜV as conforming to the international standard ISO 18878 Mobile elevating work platforms – Operator (driver) training. The course will consist of classroom based tutorials, demonstrations and practical and written tests.

## Agenda

- Introduction and pre-course theory test
- MEWP regulations and guidance
- Machine types and use
- Structural parts
- Familiarisation and pre-use inspection
- Safe operating methods and hazards
- Written theory test

Candidates successfully passing the written theory test will go on to undertake:

- Practical training
- Practical assessment

## Candidate Information

Candidates who use mobile scissor lifts or mobile scissor lifts or mobile vertical personnel platforms and static boom lifts such as tracked, trailer, truck or van mounted.

## Certification & Grants

Upon successful completion of the course, candidates will receive a digital IPAF Powered Access Licence (PAL Card) accessible via the IPAF ePAL app for an IPAF 3a & 1b qualification valid for 5 years.

The IPAF ePAL app is free to download on Apple iOS and Android devices. The app can be used to view and access an operator's digital PAL card, logbook and IPAF safety guides. Our Trainers will talk you through this process at the start of your IPAF course.

If a physical PAL card and certificate are required, these must be arranged with the training department before the course start date. An additional charge applies.

Companies that are CITB registered and meet their grant scheme eligibility requirements may be able to claim a short course duration grant. Please contact us for further information.

# IPAF Dual Static Boom (1b) and Mobile Boom (3b) Operator

## Aims & Objectives

This IPAF Dual Static Boom (1b) and Mobile Boom (3b) operator course instructs a candidate to prepare and safely operate static boom lifts such as tracked, trailer, truck or van mounted and self-propelled (mobile) articulated boom lifts, often referred to as cherry pickers.

IPAF's MEWP Operator Training is certified by TÜV as conforming to the international standard ISO 18878 Mobile elevating work platforms – Operator (driver) training. The course will consist of classroom based tutorials, demonstrations and practical and written tests.

## Agenda

- Introduction and pre-course theory test
- MEWP regulations and guidance
- Machine types and use
- Structural parts
- Familiarisation and pre-use inspection
- Safe operating methods and hazards
- Written theory test

Candidates successfully passing the written theory test will go on to undertake:

- Practical training
- Practical assessment

## Candidate Information

Candidates who use static boom lifts such as tracked, trailer, truck or van mounted and self-propelled (mobile) articulated boom lifts, often referred to as cherry pickers.

## Certification & Grants

This course is suitable for candidates who use static boom lifts such as tracked, trailer, truck or van mounted and self-propelled (mobile) articulated boom lifts, often referred to as cherry pickers.

Since the inspection, operation and use of MEWP's can be physically demanding, users should be physically fit and in good health and should, generally, not have problems with eyesight or hearing, heart disease, high blood pressure, epilepsy, fear of heights, vertigo, giddiness, difficulty with balance, impaired limb function, alcohol or drug dependence or psychiatric illness.

If you have any problems with literacy or language comprehension, or have any doubts about your fitness to use an MEWP, you must bring them to the attention of your employer. This need not preclude you from using MEWPs, provided your employer conducts an assessment and is able to put into place adequate measures, to take account of any difficulties you may have.





# IPAF Triple Static Boom (1b), Mobile Boom (3b) and Mobile Vertical (3a) Operator

## Aims & Objectives

This IPAF Triple Static Boom (1b), Mobile Boom (3b) and Mobile Vertical (3a) operator course instructs a candidate to prepare and safely operate static boom lifts such as tracked, trailer, truck or van mounted, self-propelled (mobile) articulated boom lifts, often referred to as cherry pickers and mobile scissor lifts or mobile vertical personnel platforms.

IPAF's MEWP Operator Training is certified by TÜV as conforming to the international standard ISO 18878 Mobile elevating work platforms – Operator (driver) training. The course will consist of classroom based tutorials, demonstrations and practical and written tests.

## Agenda

- Introduction and pre-course theory test
- MEWP regulations and guidance
- Machine types and use
- Structural parts
- Familiarisation and pre-use inspection
- Safe operating methods and hazards
- Written theory test

Candidates successfully passing the written theory test will go on to undertake:

- Practical training
- Practical assessment

## Candidate Information

Candidates who use static boom lifts such as tracked, trailer, truck or van mounted and self-propelled (mobile) articulated boom lifts, often referred to as cherry pickers and mobile scissor lifts or mobile vertical personnel platforms.

## Certification & Grants

Upon successful completion of the course, candidates will receive a digital IPAF Powered Access Licence (PAL Card) accessible via the IPAF ePAL app for an IPAF 1b, 3b & 3a qualification valid for 5 years.

The IPAF ePAL app is free to download on Apple iOS and Android devices. The app can be used to view and access an operator's digital PAL card, logbook and IPAF safety guides. Our Trainers will talk you through this process at the start of your IPAF course.

If a physical PAL card and certificate are required, these must be arranged with the training department before the course start date. An additional charge applies.

Companies that are CITB registered and meet their grant scheme eligibility requirements may be able to claim a short course duration grant. Please contact us for further information.

# IPAF PAL+

## Aims & Objectives

This IPAF PAL+ course provides advanced training for existing IPAF MEWP operators working in higher-risk or challenging environments such as steelwork, confined overhead spaces or challenging terrain.

Operators must hold the standard IPAF Operator PAL card in the relevant category before taking the IPAF PAL+ course for that category.

## Agenda

The course is delivered through a combination of classroom-based tutorials and practical assignments. Candidates will be assessed through a mixture of theory and practical tests.

These will include:

- A compact theory session
- Emphasis on practical training
- Challenging practical exercises
- Written and practical tests
- Individual interviews

## Candidate Information

This course is for operators who work in higher-risk or challenging environments such as steelwork, confined overhead spaces or challenging terrain. PAL+ training is open to operators with existing PAL Card qualifications in the relevant category.

## Certification & Grants

Successful candidates will receive a digital IPAF Powered Access Licence (PAL Card) accessible via the IPAF ePAL app. valid for 5 years with the relevant + categories added to their card.

Companies who are CITB registered and meet their grant scheme eligibility requirements may be able to claim a short course duration grant. Please contact us for further information





# IPAF MEWPS for Managers



## Aims & Objectives

Companies that use MEWPs need to know what their management and legal responsibilities are and how to ensure the most effective use of MEWPs. This course covers what managers need to know for safe and effective use of MEWPs on site, including planning the job, conducting a risk assessment, selecting the right equipment for optimum cost-efficiency and mitigating all possible risks.

In most countries there is a requirement for employers to train all employees who plan, supervise or manage work at height and the use of equipment for such work.

## Agenda

- MEWP legislation and guidance
- Hiring
- Machine types and use
- Structural parts and MEWP selection
- Operator training and familiarisation
- Operator daily inspection
- MEWP personal fall protection
- Safe operating methods and hazard awareness
- Safety beyond training
- Test

## Candidate Information

Employers, project managers, foremen and supervisors working in a broad range of industries such as construction, facilities management, retail, airports and arboriculture. Anyone who is responsible for planning, supervising or managing work at height with Mobile Elevating Work Platforms (MEWPS).

## Certification & Grants

Upon successful completion of the course, candidates will receive a digital IPAF Powered Access Licence (PAL Card) accessible via the IPAF ePAL app for an IPAF MM qualification valid for 5 years.

The IPAF ePAL app is free to download on Apple iOS and Android devices. The app can be used to view and access an operator's digital PAL card, logbook and IPAF safety guides. Our Trainers will talk you through this process at the start of your IPAF course.

If a physical PAL card and certificate are required, these must be arranged with the training department before the course start date. An additional charge applies.

Companies that are CITB registered and meet their grant scheme eligibility requirements may be able to claim a short course duration grant. Please contact us for further information.

# IPAF Safe Loading and Unloading



## Aims & Objectives

This IPAF Safe Loading & Unload course provides training for the safe loading and unloading of plant machinery onto vehicles

## Agenda

The course is delivered through a combination of classroom-based tutorials and practical assignments. Candidates will be assessed through a mixture of theory and practical tests.

- To safely load, unload and secure plant machinery onto a suitable vehicle using appropriate equipment ready for transportation on a public highway
- To identify associated hazards and apply effective control measures to prevent accidents
- What the legal requirements are, and how to work in accordance with them

## Candidate Information

This course is designed for any candidates who will be loading or unloading heavy plant machinery including MEWPS, dumpers, excavators, telehandlers etc. Applicants must hold a current PAL Card or MEWP operator licence.

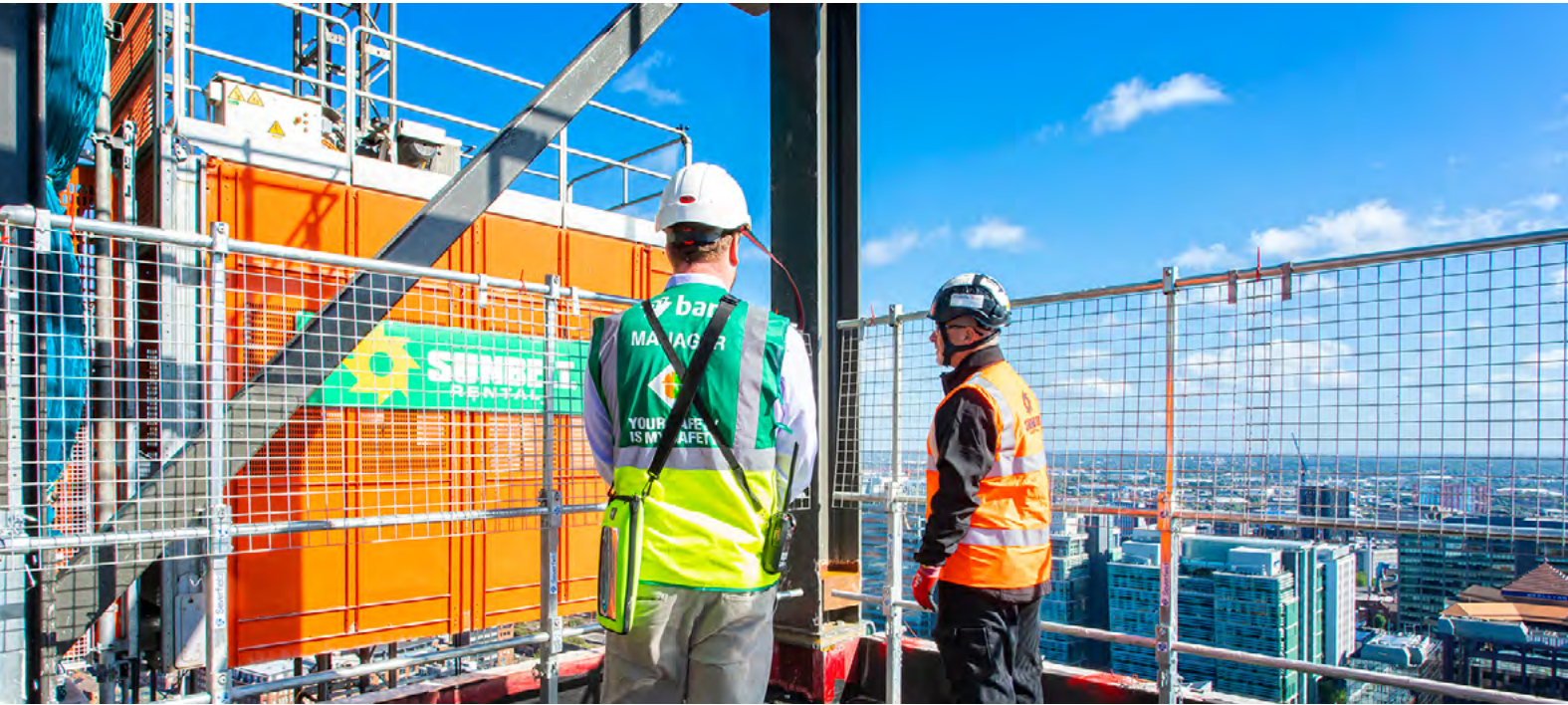
## Certification & Grants

Upon successful completion of the course, candidates will receive a digital IPAF Powered Access Licence (PAL Card) accessible via the IPAF ePAL app in the LOAD category valid for 5 years.

Companies who are CITB registered and meet their grant scheme eligibility requirements may be able to claim for a short course duration grant. Please contact us for further information.



# IPAF Hoist Operator



## Aims & Objectives

This IPAF course is designed to instruct operators on how to operate the Construction Hoist (CH), with full knowledge of the controls of the equipment and be able to carry out pre-use/daily inspections and perform the emergency descent (when applicable).

## Agenda

The course is delivered through a combination of classroom-based tutorials and practical assignments. Candidates will be assessed through a mixture of theory and practical tests.

These will include:

- Regulations and guidance
- Hoist types and use
- Knowledge of equipment controls.
- Carrying out pre-use/daily inspections.
- Performing the emergency descent (and determining when the emergency descent is applicable).
- Theory test

Candidates who successfully pass the theory test will go on to undertake:

- Practical training
- Practical assessment

## Candidate Information

This course is designed for operators who need to use Construction Hoists as part of their job role.

## Certification & Grants

Upon successful completion of the course, candidates will receive a digital IPAF Powered Access Licence (PAL Card) accessible via the IPAF ePAL app, valid for 5 years.

Companies who are CITB registered and meet their grant scheme eligibility requirements may be able to claim a short course duration grant. Please contact us for further information.

# IPAF Demonstrator

## Aims & Objectives

This IPAF Demonstrator course is designed to train a demonstrator to familiarise operators with their responsibilities and to demonstrate pre-operational and safe operating procedures, and the limitations of MEWP.

## Agenda

The course is delivered through a combination of classroom-based tutorials and practical assignments. Candidates will be assessed through a mixture of theory and practical tests.

These will include:

- Introduction to IPAF and MEWPs
- Health & Safety regulations and legislation
- Pre-use daily checks, inspection, and function tests
- Safe use of MEWPs and limitations of use
- Ground and site conditions
- Safe operating techniques
- Emergency lowering techniques
- Multiple choice test paper
- Practical demonstrating test

## Candidate Information

Candidates must hold a valid IPAF PAL operator card in the category that they wish to be trained to demonstrator level.

## Certification & Grants

Upon successful completion of the course, candidates will receive a digital IPAF Powered Access Licence (PAL Card) accessible via the IPAF ePAL app for an IPAF MEWP Demonstrator qualification valid for 5 years.

The IPAF ePAL app is free to download on Apple iOS and Android devices. Candidates can use the app to view and access an operator's digital PAL card, logbook, and IPAF safety guides. Our trainers will talk you through this process at the start of your IPAF course.

If a physical PAL card and certificate are required, these must be arranged with the training department before the course start date. An additional charge applies.

Companies who are CITB registered and meet their grant scheme eligibility requirements may be able to claim for a short course duration grant. Please contact us for further information.



**0300 373 3373**

**trainingservices@sunbeltrentals.co.uk**