

# Greener Solutions



We are the UK's leading rental provider of plant, machinery, specialist equipment and managed solutions.

And our investment in equipment that can reduce the impact on the environment and lower emissions is second to none.

Through our continued commitment to sourcing greener solutions, coupled with our industry leading expertise, we can help you meet your sustainability goals, lower emissions and energy costs as well as help strengthen your ESG credentials.



**our planet**

Our Planet is our commitment.

A blueprint for a bright, sustainable future.

No ifs, buts, or maybes.

An action plan that is being actioned right now.

Sunbelt Rentals is leading from the front.

Investing in new low and zero carbon technologies today.

Driven by our commitment to reduce our carbon footprint by 2030.

Supporting local communities every day.

Creating jobs and investing in new skills.

To create positive change for generations to come.

Taking responsibility for our actions today and tomorrow.

Doing the right thing. Because it's the right thing to do.

For our customers, for our colleagues,

For our communities, for our climate

and for our planet.

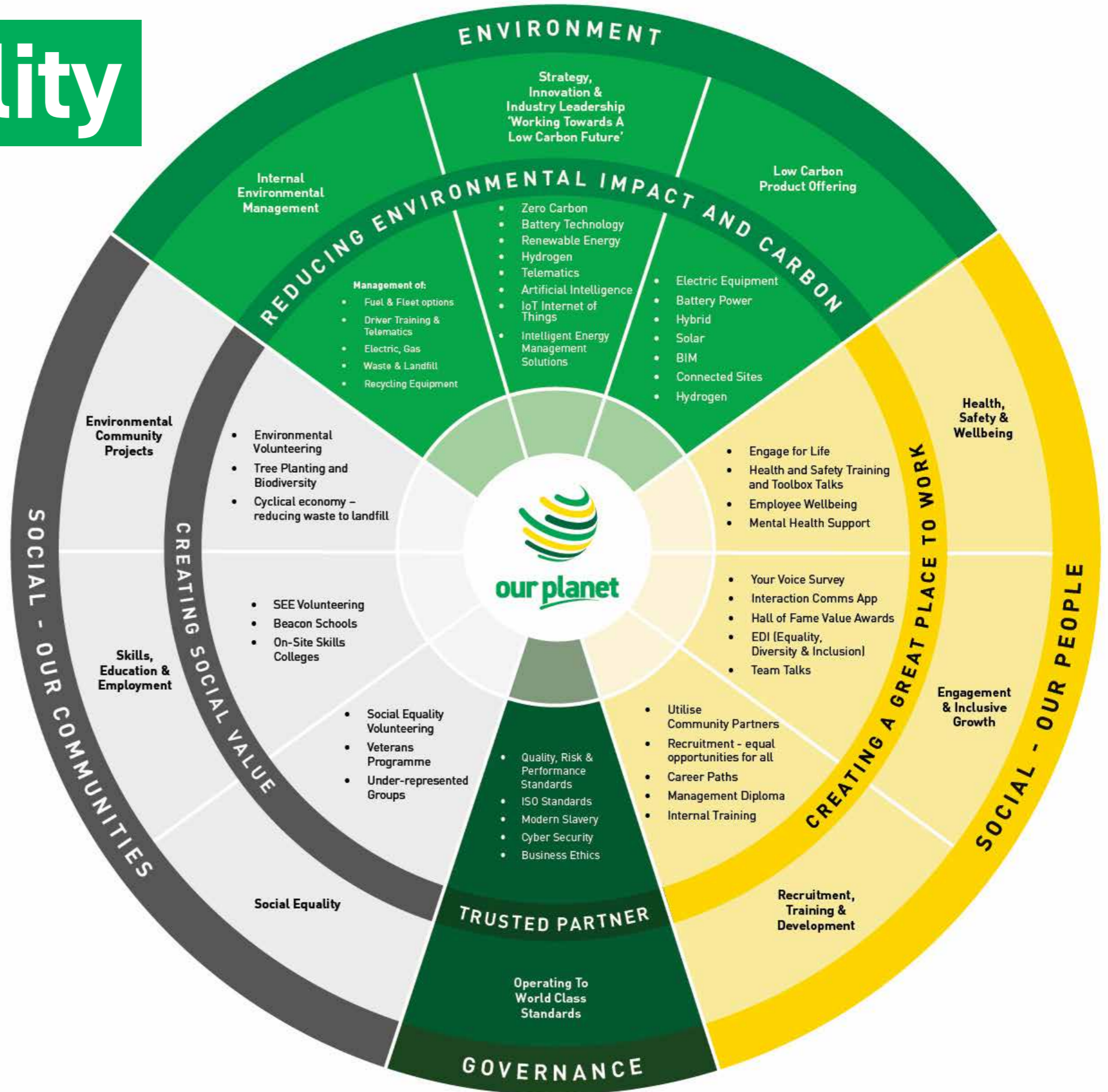
[sunbeltrentals.co.uk/ourplanet](https://sunbeltrentals.co.uk/ourplanet)

**#OurPlanet**

# Our Sustainability Wheel

## A World of Solutions

Our Planet is at the heart of everything we do. From reducing environmental impact and emissions to creating greater social value, and empowering happy, safe people.



# Green Innovation.

Our brand is green the world over, but being green goes much deeper than just colour. We are relentless in our commitment to finding better ways to overcome environmental challenges.

We are leading the curve in rental solutions and providing our customers with an extensive range of greener equipment including:

- Battery and solar powered energy solutions
- Electric plant and vehicles
- Eco cabins and solar powered welfare units
- Battery powered tools
- Solar tool charging stations
- Solar and battery powered lighting solutions
- And the latest telemetry that can help monitor performance and enable better informed decisions.

We're working alongside our customers to help them make the switch from traditional fossil fuel powered solutions, to incorporate new technologies and renewable fuels that are proved time and time again to lower emissions, reduce fuel consumption and can often lower costs.

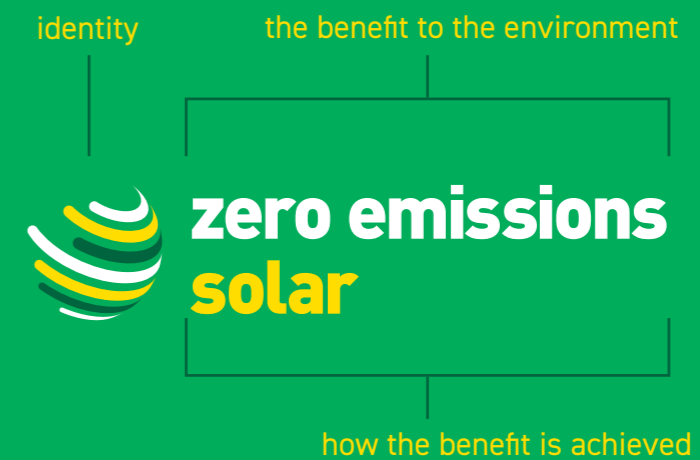
Alongside our core supply chain partners, we are continuing to research and invest in fuels and technologies of the future including wind, solar and hydrogen powered equipment.



JCB Electric Dumper

# Identifying Our Greener Equipment

We have created a range of symbols that highlight the sustainability features of our greener equipment.



Look out for them throughout this brochure and on our equipment. They're designed to help identify the key environment benefits of our greenest solutions.



The information in the brochure provides a generic overview for our range of greener equipment.

If you require exact details on any of our greener products and solutions please speak with one of our customer service experts who will help provide data sheets for specific models.

# Contents.

| Going Green In Your World

| Stage V And Fossil Free Fuels

| Energy

| Plant

| Lighting

| Welfare

| Access Solutions

| Tools

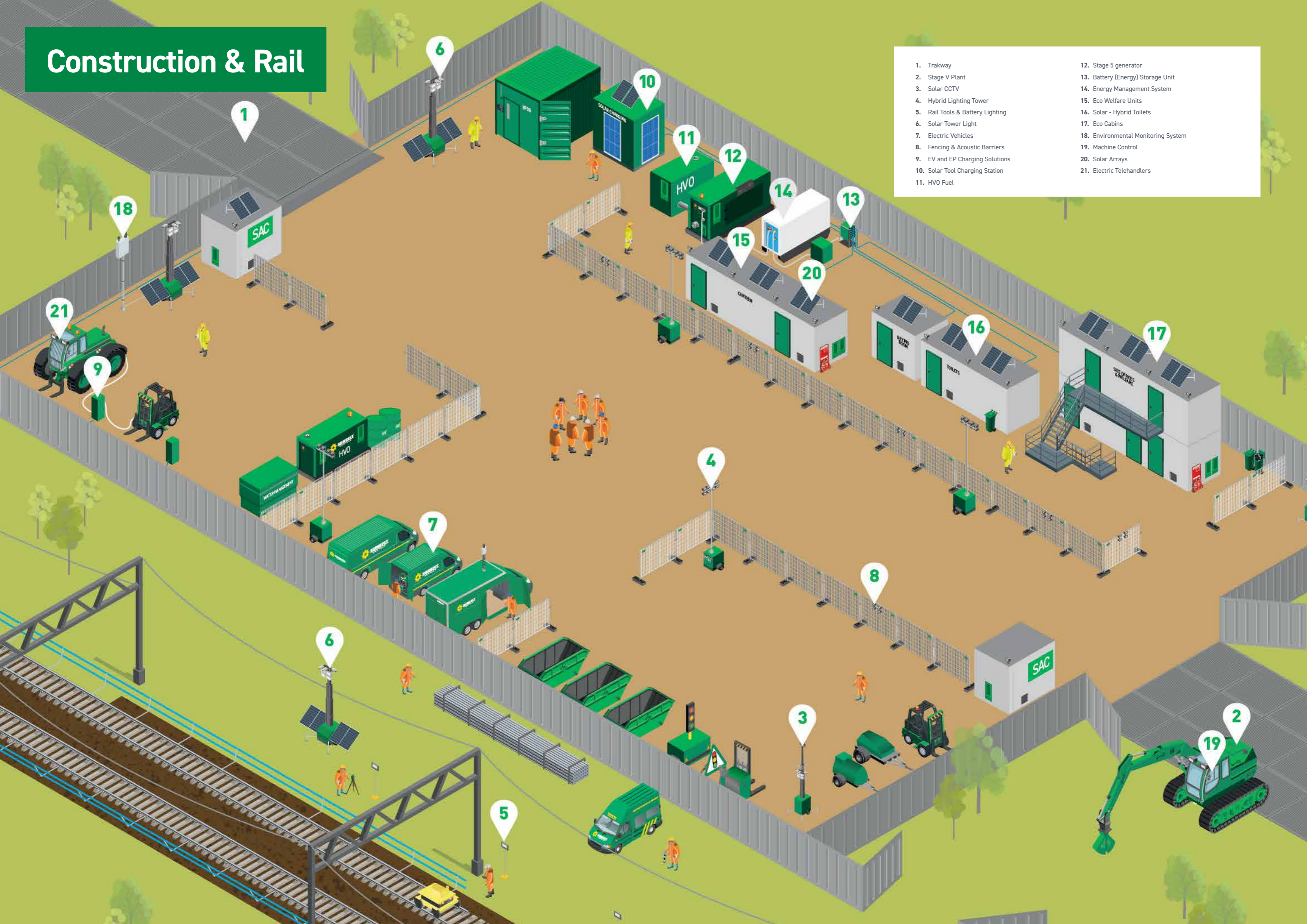
| Further Reducing and Monitoring  
Your Environmental Impact

# Going green in your world

What ever your sector, our experts can help you make positive switches and introduce solutions that are proven to lower emissions as well as reducing and monitoring the impact your site, event or project is having on the environment.

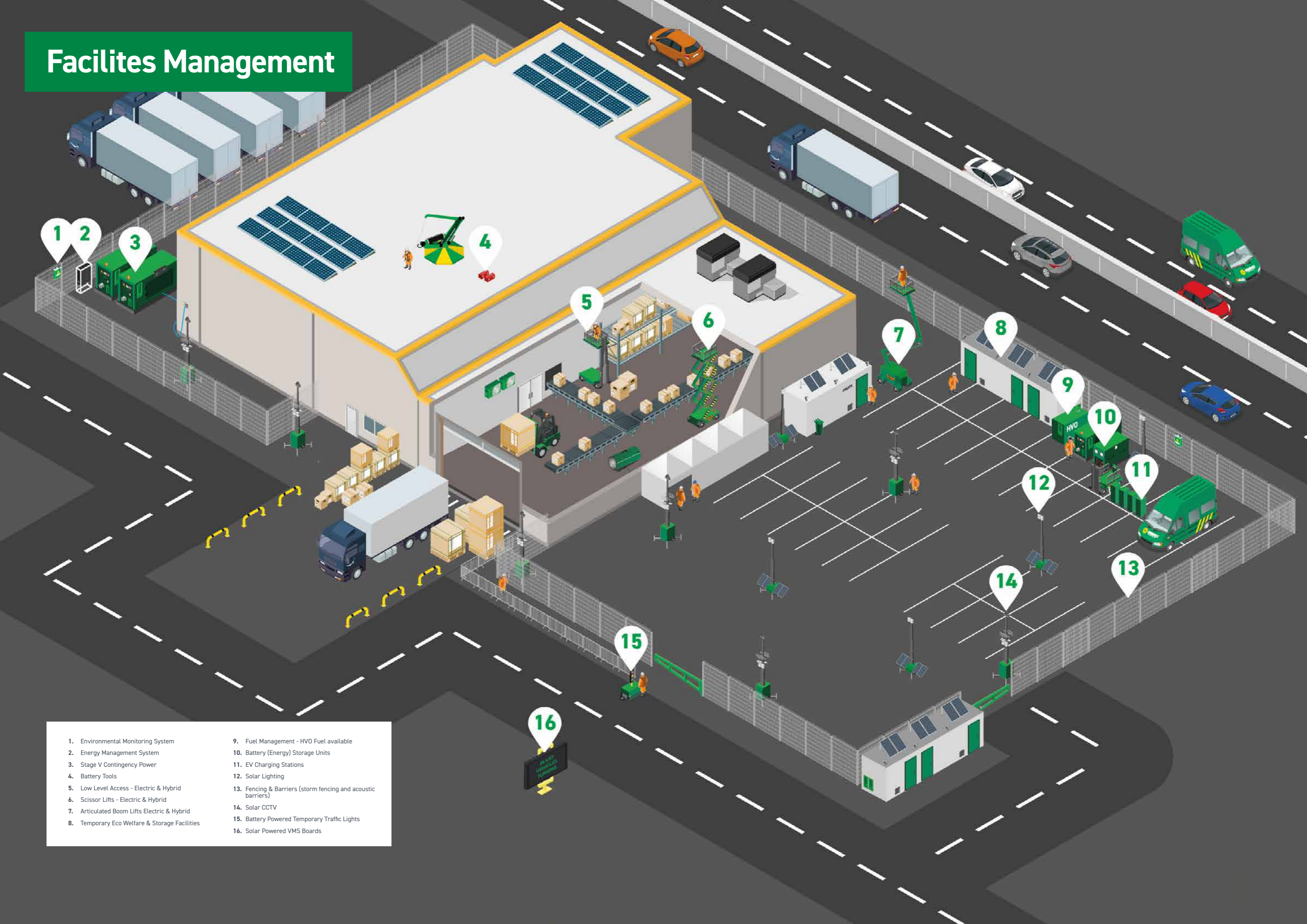


# Construction & Rail



- |                                  |                                     |
|----------------------------------|-------------------------------------|
| 1. Trakway                       | 12. Stage 5 generator               |
| 2. Stage V Plant                 | 13. Battery (Energy) Storage Unit   |
| 3. Solar CCTV                    | 14. Energy Management System        |
| 4. Hybrid Lighting Tower         | 15. Eco Welfare Units               |
| 5. Rail Tools & Battery Lighting | 16. Solar - Hybrid Toilets          |
| 6. Solar Tower Light             | 17. Eco Cabins                      |
| 7. Electric Vehicles             | 18. Environmental Monitoring System |
| 8. Fencing & Acoustic Barriers   | 19. Machine Control                 |
| 9. EV and EP Charging Solutions  | 20. Solar Arrays                    |
| 10. Solar Tool Charging Station  | 21. Electric Telehandlers           |
| 11. HVO Fuel                     |                                     |

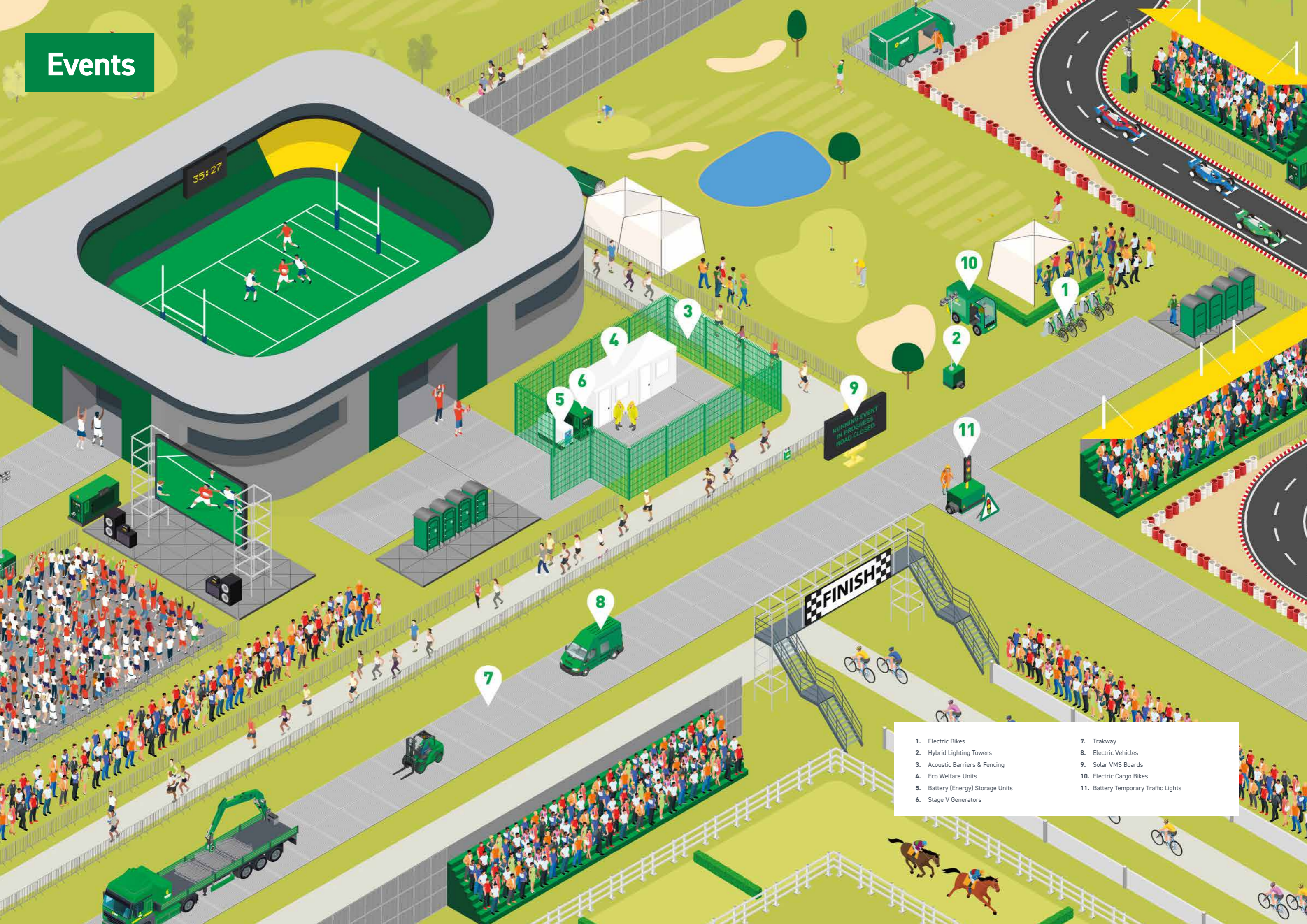
# Facilities Management



- |   |  |
|---|--|
| 1. Environmental Monitoring System            | 9. Fuel Management - HVO Fuel available                      |
| 2. Energy Management System                   | 10. Battery (Energy) Storage Units                           |
| 3. Stage V Contingency Power                  | 11. EV Charging Stations                                     |
| 4. Battery Tools                              | 12. Solar Lighting   |
| 5. Low Level Access - Electric & Hybrid       | 13. Fencing & Barriers (storm fencing and acoustic barriers) |
| 6. Scissor Lifts - Electric & Hybrid          | 14. Solar CCTV   |
| 7. Articulated Boom Lifts Electric & Hybrid   | 15. Battery Powered Temporary Traffic Lights                 |
| 8. Temporary Eco Welfare & Storage Facilities | 16. Solar Powered VMS Boards                                 |



# Events



- |                                   |                                      |
|-----------------------------------|--------------------------------------|
| 1. Electric Bikes                 | 7. Trakway                           |
| 2. Hybrid Lighting Towers         | 8. Electric Vehicles                 |
| 3. Acoustic Barriers & Fencing    | 9. Solar VMS Boards                  |
| 4. Eco Welfare Units              | 10. Electric Cargo Bikes             |
| 5. Battery (Energy) Storage Units | 11. Battery Temporary Traffic Lights |
| 6. Stage V Generators             |                                      |

# Film & TV



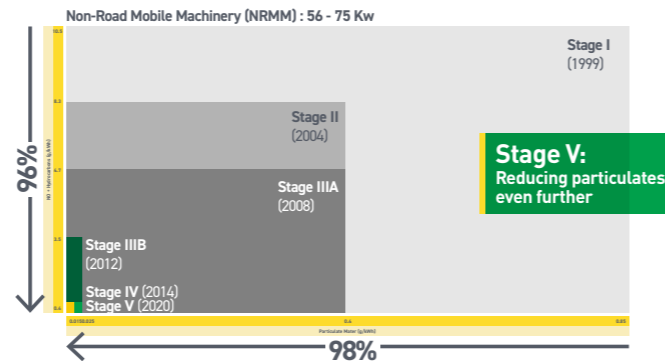
1. Battery Storage Unit (BSU)
2. HVO (Fossil Free, Lower Emission Fuel)
3. Stage V Generator
4. Energy Management System (EMS)
5. Eco Welfare Units
6. Solar and Battery Tower Light
7. Trakway
8. Environmental Monitoring
9. Acoustic Barriers and Fencing
10. Electric Telehandler
11. Stage V Telehandler
12. Electric Bikes
13. EV Charger
14. Solar Array

# Stage V & HVO Fuel

Whilst electric power isn't an option across larger plant, you can still reduce your emissions by choosing Stage V.

We offer a wide range of stage v complaint equipment including excavators, dumpers, generators, butt fusion machines and powered access equipment.

And to reduce your emissions further we can supply HVO fuel and endorse its use across our range of equipment.



## HVO Fuel

HVO fuel is one of the cleanest fuels on the market. It's a second-generation, synthetic, advanced biofuel that eliminates up to 90% of net CO2 and significantly reduces nitrogen oxide (NOx), particulate matter (PM) and carbon monoxide (CO) emissions.

Our dedicated fuel team can arrange for HVO to be delivered directly to your site and it's compatible with our full range of equipment.

We've partnered with a leading HVO provider to ensure the fuel we provide is manufactured from 100% renewable and sustainable waste, all ethically sourced and derived from raw materials.

HVO is a 'drop in' fuel that can replace diesel with no changes required to the engine or operational infrastructure. It's completely bio degradable, odourless and has a 10 year shelf life.

FOR MORE INFORMATION ON HVO FUEL  
CONTACT OUR DEDICATED FUEL TEAM:  
**08081 695349**  
**FUEL@SUNBELTRENTALS.CO.UK**

## Stage V

Stage V is the latest stage of engine emission legislation designed to reduce pollution from the use of off-road engines.

At Sunbelt Rentals we've invested millions in Stage V compliant equipment from a range of leading manufacturers.

Equipment that meets the Stage V standard can help improve air quality, reduce carbon emissions and PM (by filtering out particulate matter before it reaches the exhaust) and offer greater fuel efficiency.

Our Stage V plant equipment can be used with HVO fuel to reduce emissions even further.



Stage V generator



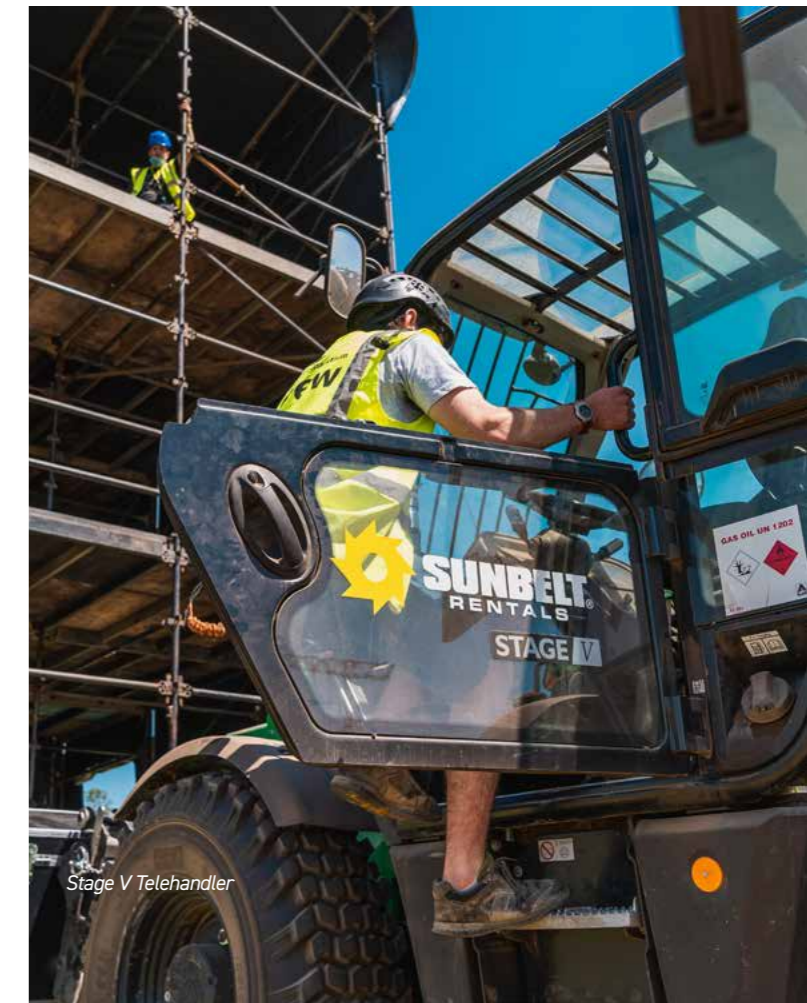
Stage V butt fusion machines (Utilities)

## HVO Compatible Fleet

All our plant, lighting and generators are compatible with HVO (Hydrotreated Vegetable Oil) fuel.

### HVO Emission Reduction

- Carbon reductions of up to 90% (Confirmed by ISCC - the International Sustainability and Carbon Certification Scheme)
- Reduction in NOx (Nitrogen Oxides) emissions by up to 27%
- PM (Particulate Matter) reduction by up to 84%
- Fuel consumption reductions of up to 10%



Stage V Telehandler

# Cleaner Energy Solutions

Temporary power solutions are often one of the largest contributors to noise and carbon emissions on sites, film sets and at events.

But it doesn't have to be this way...

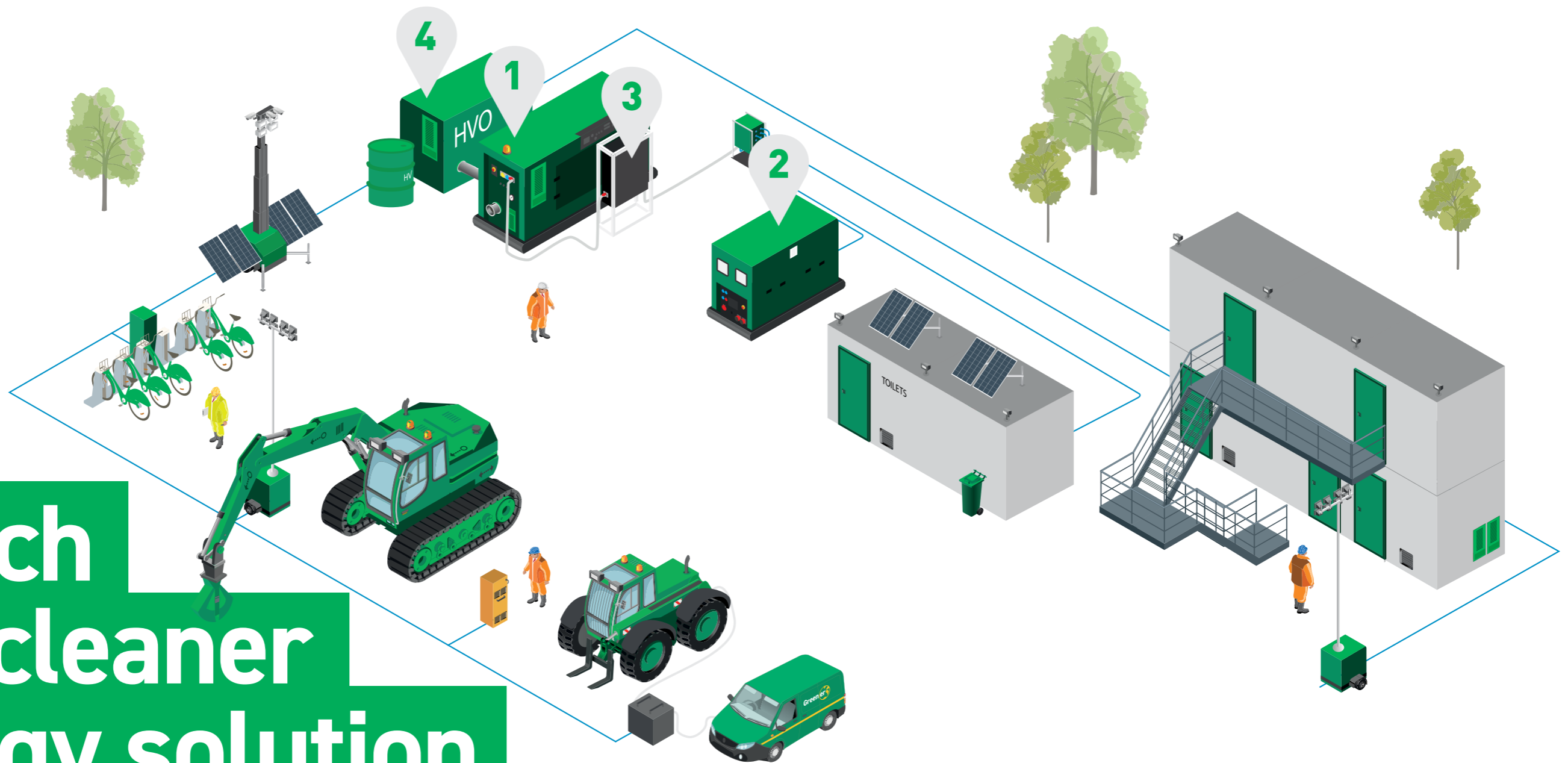
With our cleaner energy solutions and proven expertise, you can lower emissions, reduce fuel consumption, often reducing costs while optimising your energy, and strengthening your ESG credentials.

Through our team of experts and wide range of cleaner energy solutions the power to go greener is well and truly in your hands.

Whatever the challenge, leave the [how](#) to us.



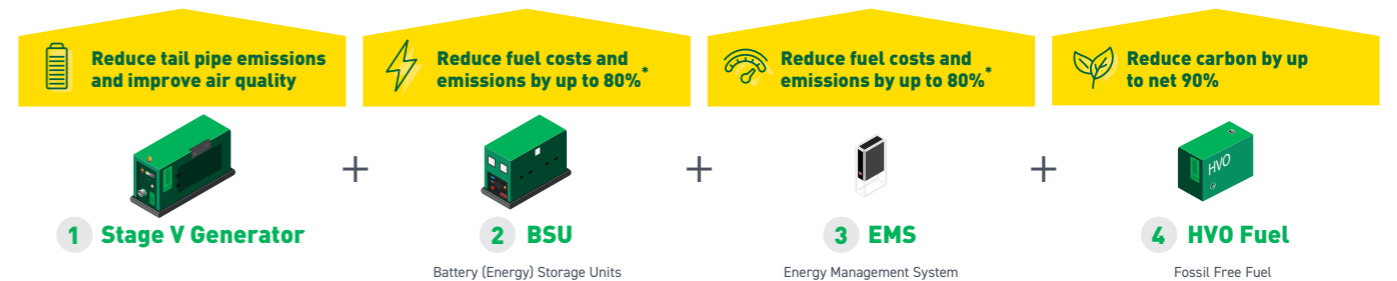
# Switch to a cleaner energy solution and save



Our Energy team offer generators and battery (energy) storage units to support temporary power, critical power and temperature control solutions, and we pride ourselves on being industry leading experts when it comes to optimising your energy so you can save fuel, reduce emissions and ensure a continued and reliable power solution that works for you.

Our experts will work with you to design the optimum cleaner energy solution for your needs, combining traditional and renewable power technologies that when used in the ideal configuration are proven to:

- Reduce generator size
- Lower fuel consumption
- Lower emissions
- Provide long periods of silent power



Our stage v generators use the latest technology to improve air quality by reducing CO2 emissions, nitrogen oxides (NOx) and particulate matter (PM).

\*Battery (energy) storage units can be installed alongside a fuel powered generator or mains connection to offer periods of silent power, and are proven to reduce fuel consumption by 50-80%.

\*By adding an energy management system to your site you can regulate and monitor power distribution in real-time. Which in turn reduces your energy consumption, fuel costs and carbon emissions by up to 80%.

And finally, make the switch from fossil fuels to HVO fuel, responsibly sourced and made from hydrotreated vegetable oil it will immediately reduce your carbon emissions by up to 90%.

When all four elements are introduced to a site, the less energy you waste, the less fuel you use and the less carbon emissions you generate. Making savings across the board.

It's worth noting that our cleaner energy solutions can be used individually or in various combinations on site to help reduce your carbon emissions. Our expert power team can tailor the greenest and most cost-effective solution to suit your application.

Talk to our team today on **0300 373 1193** to find out how we can help you optimise your energy.



Battery (Energy) Storage Unit

## Battery (Energy) Storage Units



**Save fuel, lower emissions and enjoy silent power when you combine a battery (energy) storage unit (BSU) with a generator.**

BSUs are designed to work alongside power sources such as generators (or a mains electricity supply) to create a hybrid power system.

They are ideal when 24/7 power is required with varying loads (typically higher loads during working hours and minimal loads out of working hours).

As the generator delivers power it will simultaneously charge the BSU, and when a lower load is detected (such as overnight) the generator will turn off, seamlessly transferring the load to the BSU delivering silent, fuel free, emission free power.

The two systems work together in harmony to ensure

that when a higher demand is detected, the load transfers back to the main generator, allowing the battery bank to then recharge.

**All savings can be tracked and monitored through the BSUs built in telemetry, enabling the user to make better informed decisions on energy usage and optimisation.**



## Energy Management Systems



**Take control of your energy consumption and distribution on site with an energy management system (EMS).**

An EMS works by controlling and reducing the energy output from appliances used in welfare cabins and temporary accommodation units. It can be programmed by our expert engineers to turn off devices when not in use (heaters, water boilers etc).

In doing so the EMS can effectively suppress peak loads which not only save fuel consumption but also enable generators to be downsized, creating further cost savings and lowering emissions. It works silently in the background enabling

sites to become more energy efficient as power consumption is regulated during times when demand is at its highest.

**Through built in telemetry the EMS enables you to view advanced data and statistics via the real time dashboard, allowing you to adjust, optimise, measure and report on carbon and cost savings.**



## Solar Panels/Arrays

Our solar panels can be paired with other power sources (such as generators and BSUs) to help harness renewable energy and further reduce your carbon footprint.

Solar panels can be deployed as a single unit – or arrays containing multiple panels on purpose-built frames.

**Our expert team can advise the most effective set up based on your power requirements and availability of space.**



## Electric Vehicle Charging Solutions

We have a range of temporary charging solutions for electric vehicles and electric plant.

Whether you need to charge a single vehicle, or hundreds of electric vehicles, our team of experts will work with you to develop the most commercially viable and environmentally friendly solution to suit your needs.



## Peak Power Support (Punch-Flywheel)

Downsize your generator and reduce fuel consumption when powering equipment with a dynamic load (cranes, pumps & hoists).

Peak power support systems (also known as flywheels or a punch-flybrid) will capture energy that's typically wasted when powering dynamic loads and store it in a high-speed energy 'flywheel'.

When used in conjunction with the generators (or mains power) they'll capture, store and discharge large bursts of energy needed to support the operation of tower cranes, hoists and large pumps.

This enables you to significantly downsize your generator(s), enabling them to run more efficiently, with no interruption to the power supply. The unit can also be paired with a BSU to further reduce energy consumption if overnight power is needed for minimal loads such as aviation lights (typically found on tower cranes).

Peak power support units have resulted in customers being able to halve the traditional size of generator which can equate to a 40% reduction in fuel consumption, that also lowers CO2 emissions and fuel costs. Savings and performance can be tracked through the on-board telemetry.



Peak Power Support (Punch Flywheel)

# Electric Plant

We're continuing to invest in the latest electric plant and stage v technology and are proud to offer the largest fleet of greener plant in the UK rental market.

The power requirements of these excavators coupled with battery capacity mean right now electric plant is only offered across the smaller range of plant. However, if you want a greener solution in larger plant we have an extensive range of stage v compliant excavators and telehandlers.

All electric plant is designed to match the power and performance of its diesel powered alternative, and offers an effective solution to working in zero emission zones, noise sensitive areas, enclosed spaces, tunneling and night work.

We will continue to invest as technology moves forwards towards hydrogen and other innovations.

## Delivering a full days work:

Electric plant has been designed to deliver a full day's work on a single charge. This is based on telematics data gathered over many years indicating an average day's work for plant is between 7-8 hours intermittent usage. Continuous usage times will differ.

The average charge times are included in this brochure, but will vary depending on your exact power supply.



Electric 1.5T Excavator



## Plant Charging Solutions

Electric plant is simple to charge providing you have a 110v, 230v or 415v power supply on site (from a sustainable source).

The higher the voltage the faster the charge times.

We offer the Universal Fast Charge Point from JCB, which can decrease the charge time should you need it on site.

The fast charge unit is compatible with a 415v power supply and all electric JCB plant.

### AVG FAST CHARGE TIMES:

JCB 6M Telehandler - 110 mins (32A/415v)  
 JCB 1.5T Excavator - 150 mins (32A / 415v)  
 JCB 1T Dumper - 100 mins (32A/415v)



Electric 1.5T Excavator

## 1.5T Excavators



The industry's first fully electric mini excavator.

Leading the way in greener plant technology, our JCB 19C 1E is designed to deliver a standard day's work on a full charge.

Electric plant delivers the same performance as standard fuel powered models, but with the added benefits of low noise and zero emissions.

External noise is reduced by 10dB (compared with diesel), making them ideal for low emission zones and enclosed spaces or night work. If you have a power source on site (110v, 230v or 415v) electric plant is simple and easy to charge, the higher the voltage, the faster the charge time.



### AVERAGE CHARGE TIMES

(WILL VARY DEPENDING ON EXACT POWER SUPPLY)

110v (on board) - 12 hours

230v (on board) - 8 hours

Fast Charge 415v - 150 minutes

(OPTIONAL OFF BOARD CHARGE SOLUTION)

### AVERAGE RUN TIME

4 hours continuous

7-8 hours - based on average days usage

## 2.5T Excavators

Our 2.5 tonne electric excavators offer the latest battery technology.

The fully electric Volvo excavator offers a safe and highly versatile option for working in enclosed spaces, low emission zones and noise sensitive areas. Charging is simple providing you have a power source on site.

A 110v supply can deliver a full charge overnight. While a 230v supply can deliver a full charge in under 5 hours.



### AVERAGE CHARGE TIMES

(WILL VARY DEPENDING ON EXACT POWER SUPPLY)

110v (on board) - 10 hours

230v (on board) - 5 hours

### AVERAGE RUN TIME

4 hours continuous

7-8 hours - based on average days usage



# 1T Dumpers



Our fleet of electric dumpers includes the 1.5 ton swivel tip DW15e from Wacker Neuson and the forward tipping 1TE from JCB.

Both are 4WD, with all the power you'd expect from a fuel powered dumper, but with low noise and zero emissions making them ideal for enclosed spaces, low emission zones and built up areas.



**AVERAGE CHARGE TIMES**  
(WILL VARY DEPENDING ON EXACT POWER SUPPLY)

**JCB 1TE**  
110v (on board) - 12 hours  
230v (on board) - 8 hours  
Fast Charge 415v - 100 minutes  
(OPTIONAL OFF BOARD CHARGE SOLUTION)

**WACKER NEUSON DW15E**  
230v (on board) - 8 hours

**AVERAGE RUN TIME**  
4 hours continuous  
7-8 hours - based on average days usage

# Machine Control

Machine control is innovative survey software fitted to plant and machinery to help operators improve accuracy and productivity.

Our survey team can fit machine control to any suitable excavator, so whether you're looking to hire it ready fitted to a machine or have it installed on your own plant they're on hand to talk you through the options.

By installing machine control you can reduce the time, cost and energy required when excavating, grading, dredging or piling. Operators can move earth faster and for longer, reducing your operational costs as plant is on site for less time.



# 6M Telehandler

Our 100% electric 6M telehandlers from JCB and Faresin offer a zero emissions and low noise solution to moving loads of up to 2500kg.

Our 6m electric telehandlers can deliver a standard days' work on a single charge. With multiple charging solutions available - if there's a power source on site, electric plant can easily be charged. Ideal for use in residential areas, enclosed spaces, environmentally sensitive sites, events and night work.

Added safety features include load control, preventing forwardtipping when handling heavy loads, as well as full telematic data to monitor performance and usage.



**JCB 6M AVERAGE CHARGE TIMES**  
110v (on board) - 12 hours  
230v (on board) - 8 hours  
Fast Charge 415v - 110 minutes  
(OPTIONAL OFF BOARD CHARGE SOLUTION)

**AVERAGE RUN TIME**  
4 hours continuous  
7-8 hours - based on average days usage

**FARESIN 6M AVERAGE CHARGE TIMES**  
110v (on board) 12-15 hours  
230v (on board) 8-10 hours

**AVERAGE RUN TIME**  
3-4 hours continuous  
6-8 hours - based on average days usage

Electric Telehandler and 1T Dumper



# Solar, Battery & Hybrid Lighting

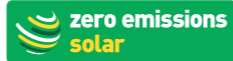
We offer the UK's largest range of environmentally friendly tower lights including hybrid and fully solar powered units.

Our lights are available with a range of added safety features and the latest telemetry, making them fully compliant across a range of sectors including Rail, Events, Industrial and Highways.



Solar-Hybrid Tower Light

## Solar Tower Lights



Our 8m fully solar LED tower lights utilise the latest technology to provide continuous lighting all year round, with no other power source other than the sun.

Four extendable solar panels ensure optimum charging and easy positioning. The unit illuminates an area of 2400 square metres with high efficiency LED lights.

- Zero emissions
- Zero noise
- Zero fuel
- Silent operation
- Fitted with sensors that detect when natural light is fading
- Ideal for use in noise and pollution sensitive locations
- Stabilisers, telematics, sensors and lockable control panels for enhanced safety



## Hybrid Tower Lights



Our 9m hybrid LED tower lights provide 3800 square metres of illuminated area and incorporate state-of-the-art technology to provide maximum fuel efficiency.

- Combination fuel/battery self-charging hybrid
- Reduced emissions
- Fuel savings of up to 94% in comparison with metal halide units
- On board telemetry allows you to control and view your lights remotely
- HVO compatible



## Eco Tower Lights

Our 9m eco LED tower lights provide 4200 square metres of powerful illumination.

Built-in detectors enable the unit to automatically turn on when natural light fades.

- Fuel savings of up to 72% when compared with metal halide units
- Operatives do not need to travel between sites to turn units on and off due to built-in detectors and on board telemetry
- Multi adjustable/tiltable floodlights
- HVO compatible



## Solar Hybrid Tower Lights

Our 9m solar hybrid LED tower lights incorporate a fold-out solar lighting panel, which is able to power the unit whilst simultaneously charging a back-up battery.

Further back-up is provided by a combustion engine, providing sites with up to 3000 hours run time from a single tank of fuel.

- Reduced emissions
- Fuel savings of up to 99% when compared with metal halide units
- 2400 square metres of illuminated area
- Stabilisers, telematics, sensors and lockable control panels for enhanced safety
- HVO compatible



## X-Chain Tower Light

Our 7m X-Chain tower lights are electrically powered, featuring a circuit breaker for electrical protection against overload.

Up to 10 units can be chained together from one power source.

- Zero\* Emissions
- Zero\* Fuel
- 2400 square meters illuminated area

\* When used with a sustainable power source such as mains/grid power



## Peli Lights, Portable Lighting for the Railway

Our range of Peli Eco Lighting is one of the most sustainable lighting options available in today's market.

The Peli 9600 Area Lighting Unit can cover up to 500 linear meters. The modular lighting system can be configured to suit your site. The lights can be connected to bases giving a free standing light or fixed to platform edges, fences, tunnels & buildings as required. 14m Connection cables are supplied to link the lights together.

The 9430 Battery Task Light is a powerful, portable light with retractable mast and head that can be angled as required.

While the 9480 is a Portable Flood Light that can be extended to over 600mm height. It comes with 3 light settings giving 1000-4000 lumens and has a battery life of up to 28 hours (based on 1000 lumen setting).

## X-Eco Battery Light

Our X-Eco Battery powered tower lights will provide up to 72 hours of illumination from a single 8 hour charge. They can be charged from any sustainable power source and are ideal for events and night work in noise and environmentally sensitive areas.

- Zero Fuel
- Zero Emissions
- 2000 square meters illuminated area



## X-Rail Link Lights

Our X-Rail Link Lighting kit is designed to bring emission free lighting to your rail site.

The pack comes with 9x connectable lighting masts and 10m cables. The masts link together to cover 90m of illumination delivering a total illuminated area of 1300sqm from a single battery pack.



# Greener Lighting Comparison Chart

The UK's largest and most economical range of lighting solutions.  
All Towerlights are HVO compatible, reducing emissions by 90%.



X-ECO



X-ECO HYBRID



X-SOLAR HYBRID



X-SOLAR



X-CHAIN\*



X-ECO BATTERY



X-RAIL LINK LIGHT



9430 TASK LIGHT



9600 AREA LIGHTING UNIT

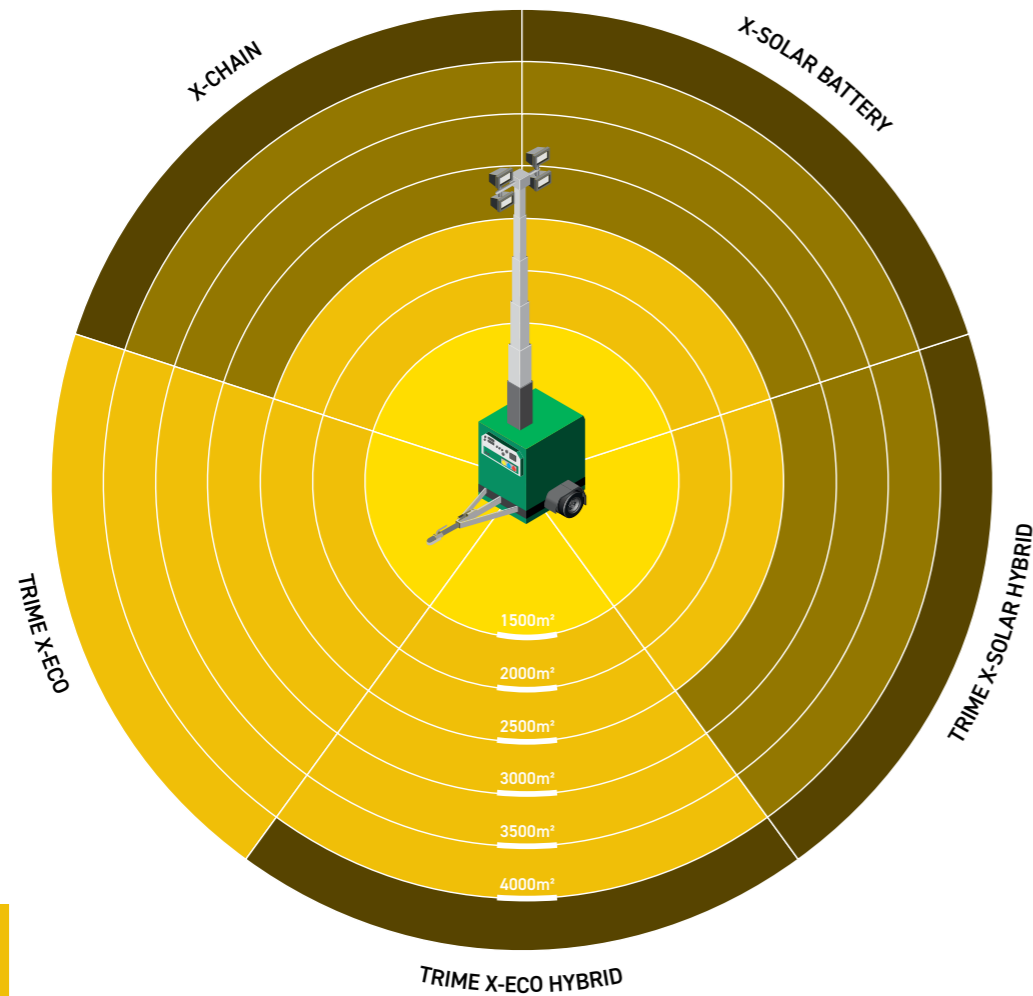


9480/9490 DETACHABLE BATTERY TASK LIGHT

	X-ECO	X-ECO HYBRID	X-SOLAR HYBRID	X-SOLAR	X-CHAIN*	X-ECO BATTERY	X-RAIL LINK LIGHT	9430 TASK LIGHT	9600 AREA LIGHTING UNIT	9480/9490 DETACHABLE BATTERY TASK LIGHT
<b>Power</b>	Fuel	Fuel/Battery	Solar/Battery/Fuel	Solar/Battery	Plug 230v/32A (power up to 10 units from a single source)	Battery	Battery	Battery	Battery	Battery
<b>Light Coverage or Lumens (5 Lux Min)</b>	4200 sqm	3800 sqm	2400 sqm	2400 sqm	2400 sqm	2000 sqm	1300 sqm	500 - 3000 Lumens	1000 - 3000 Lumens	1000- 4000 Lumens
<b>Emissions</b>	336kg/month	171kg/month	17kg/month	Zero	Zero	Zero	Zero	Zero	Zero	Zero
<b>Fuel Usage (litres per hour)</b>	0.54 L	0.23 L	0.19 L	Zero	Zero	Zero	Zero	Zero	Zero	Zero
<b>Avg Fuel Costs</b>	£198/month	£82/month	Zero - £36/month	Zero	Zero	Zero	Zero	Zero	Zero	Zero
<b>Silent Running Time</b>	N/A	18 hours	72 hours	365 nights	365 nights	100%	100%	100%	100%	100%
<b>Run Time Before Re-fuel or Re-charge</b>	200 hours	860 hours	3000 hours	365 nights continuous	365 nights continuous	72 Hours	33 Hours	8 - 15 Hours	Up to 30 Hours	6 - 8 Hours
<b>Recharge Time (lamps on)</b>	N/A	9 hours	up to 10 hours	N/A	N/A	10 hours	3.5 Hours	5 Hours	2 Hours	8 Hours
<b>Recharge Time (lamps off)</b>	N/A	8 hours	up to 8 hours	N/A	N/A	8 hours	2.5 Hours	N/A	N/A	N/A
<b>Min Dimensions (mm)</b>	2320 x 1380 x 2420	2944 x 1466 x 2570	3800 x 1656 x 2620	3360 x 2138 x 2522	1200 x 850 x 2100	2320 x 1380 x 2100	460 x 210 x 130	400 x 200 x 230	460 x 210 x 130	394 x 165 x 260
<b>Max Dimensions (mm)</b>	2320 x 1550 x 850	2944 x 2928 x 8500	3800 x 1656 x 8500	3360 x 4150 x 8000	1850 x 1430 x 7000	2320 x 1380 x 8500	867 x 627 x 3,120	400 x 210 x 300	460 x 210 x 300	394 x 165 x 630
<b>Weight (Dry)</b>	920 kg	1290 kg	1890 kg	1523 kg	300 kg	936 kg	63 kg	10.3 kg	3.82 kg	12.5 kg

\* Fuel rates based on average fuel prices as of Sept 2022

## Tower Light Comparison Chart



**MINIMUM  
OF 5 LUX**

### What is Lux?

Lux is a unit of illumination.

One lux is the amount of illumination provided when one lumen is evenly distributed over an area of one square metre.

### HSE Guidelines

Activity	Typical locations/ types of work	Avg. luminance (lux) 1x	Minimum measured illuminance (lux) 1x
Movement of people, machines and vehicles	Lorry park, corridors, circulation routes	20	5



Solar Tower Light

# Site Welfare Facilities





## Eco Cabins

Our Eco cabins have a lower environmental impact than standard cabins and offer benefits including lower noise, significant reductions in carbon emissions, less fuel use, water savings, less heat loss and reductions in generator use.

These cabins are available in an extensive range of layouts and sizes. The cabins can also be linked and double stacked to allow for further flexibility to suit all your requirements.

Suitable as: Offices, canteens, toilets, showers, training rooms, drying rooms, meeting rooms, changing rooms, first aid rooms.



### Standard vs Eco cabins

	Standard Specification	ECO Specification	
Heat Loss Comparison	1.53kw Constant required to maintain temperature	0.945kw Constant required to maintain temperature	<b>39%</b> less heat loss
Lighting Efficiency Comparison	2.4kw hours per day 600kw hours per annum 315kg CO2 per annum (Total Consumption)	0.7kw hours per day 175kw hours per annum 92kg CO2 per annum (Total Consumption)	<b>71%</b> reduction in CO2 output
Water Usage Comparison	1,737,500 ltrs Per annum	735,000 ltrs Per annum	<b>58%</b> water saving

## Mobile Eco Welfare Units

Our mobile welfare units come in 12ft, 16ft and 20ft sizes, accommodating up to ten people.

They can be easily towed, secured and manoeuvred on site in less than 3 minutes by one person.

The mobile welfare units are equipped with; canteen area, private WC and drying room. 16ft and 20ft sizes also come with the option of a separate office.

- Low noise pollution
- CO2 emissions reduced up to 80%
- Available in a range of sizes
- Easily towed, one-person operation
- Powered by solar panel and battery, with a back up generator
- Provide pleasant, safe and secure working environments

## Static Eco Welfare Units

Our static eco welfare units provide secure welfare and office space, providing pleasant and safe working environments in one compact, cost-effective, environmentally efficient package.

Typically equipped with: separate drying room, office, canteen area, private WC, integral noise-reduced diesel generator, lighting and electrics, heating and water heaters, integral water and waste tanks.

- Ease of transport
- Low noise pollution
- Increased generator efficiency
- Available in a range of sizes (25ft, 32ft) to seat up to 8 or 12 people
- Solar panel technology option

## Solar Hybrid Portable Toilets

Our solar hybrid portable toilets are powered by roof mounted solar panels during the day, with a generator back-up for overnight use.

With separate female and male facilities, they have a fresh water chemical-free flush, hot running water, PIR-sensor LED lighting and top-rated environmental performance.

### SUSTAINABLE

95.5% more sustainable as the generator will last longer due to reduced use

### LOWER NOISE

95.5% lower noise pollution. Virtually silent due to the use of a small generator and minimal demand

### REDUCED EMISSIONS

95.5% less exhaust emissions, with a reduction in environmental costs associated with service visits

### RECYCLABLE

Made from stainless steel and 97.2% recyclable

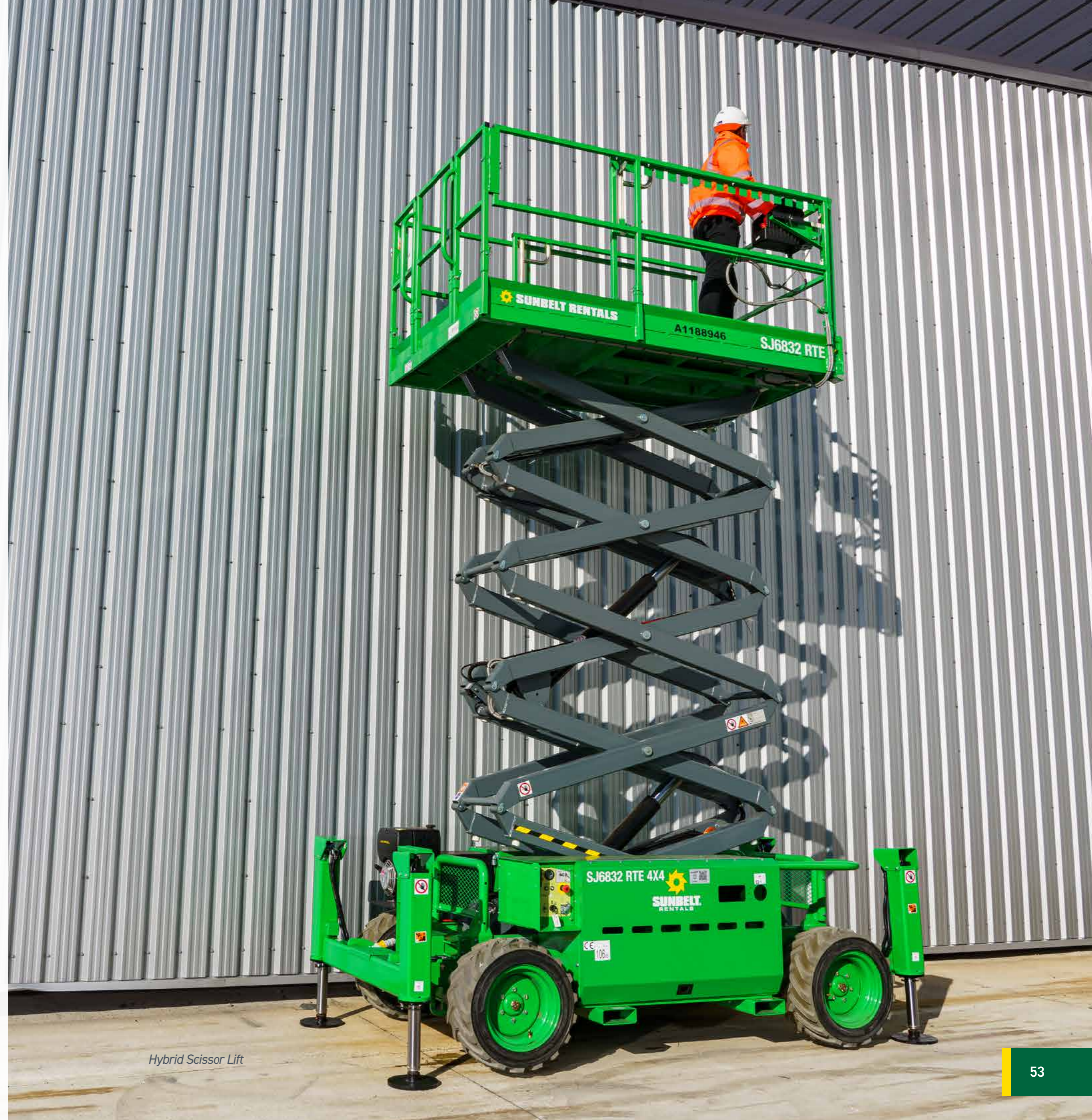


# Electric, Hybrid & Stage V Access Solutions

Electric Powered Access equipment has long been available for use in enclosed environments such as warehouses.

But in recent years the range of electric and hybrid powered access equipment has expanded for use both indoors and outside, and we have invested heavily in the latest electric and hybrid scissor lifts, vertical lifts and booms to help you work more sustainably at heights of up to 28m.

In addition, we now offer access control and telemetry across our full range. This enables you to stay in control of who's operating your access equipment and monitor usage reports that can help drive sustainability.



Hybrid Scissor Lift

## Vertical Masts

With articulated, up-and-over capability and a 360-degree rotating mast, our electric vertical mast lifts allow quiet, smooth operation with zero emissions.

Ideal for reaching awkward places, they are suited for use in warehouses, factory operations, facilities maintenance and stock control. They come with reach capabilities of up to 12.6m.



## Boom Lifts Electric and Hybrid



Our electric and hybrid booms can reach heights in excess of 28m.

We offer both articulating and telescopic solutions, enabling you to access hard to reach areas and reach over or around obstructions.

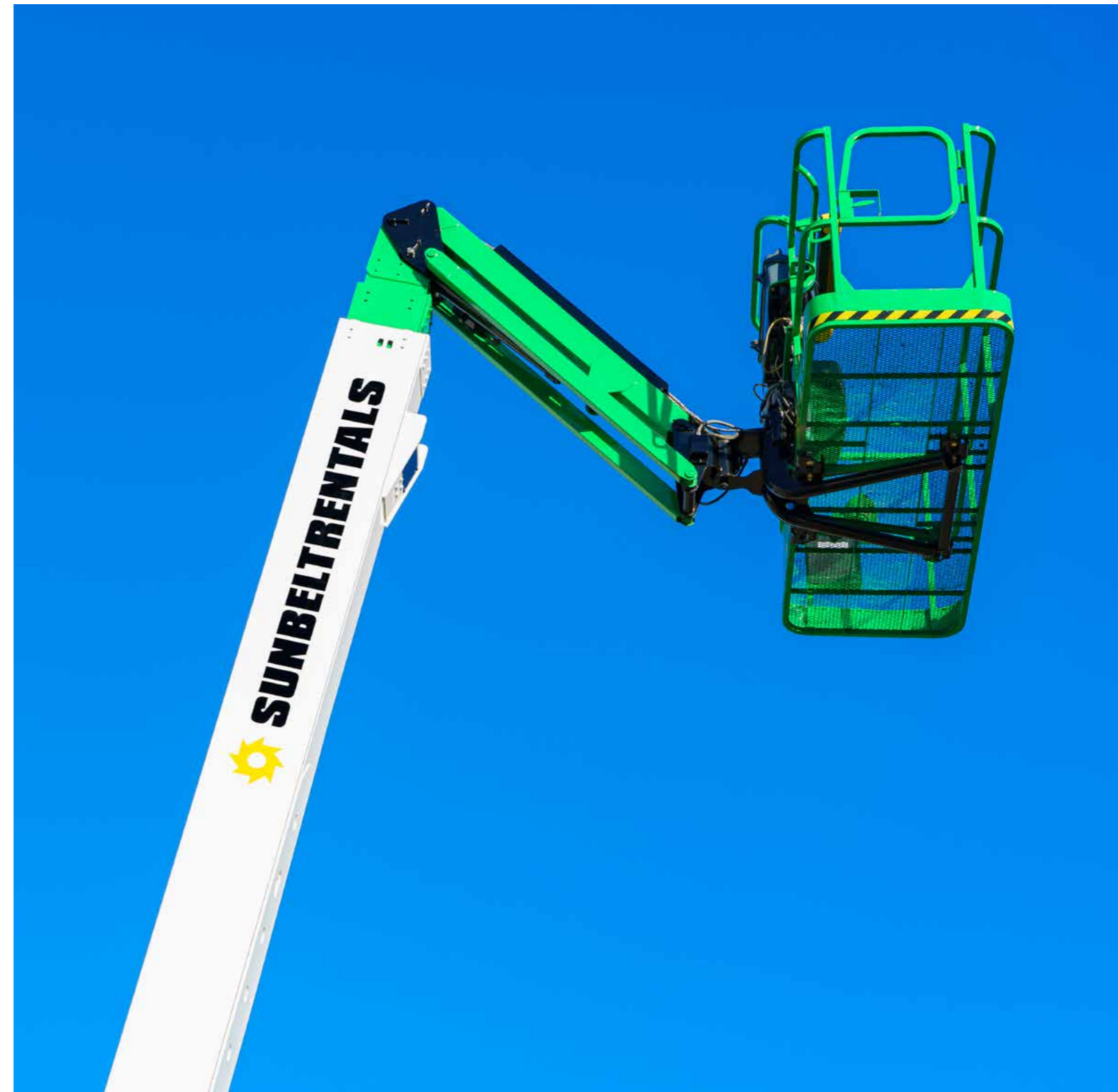
They can be hired in a range of sizes and specifications to suit the work being undertaken and we offer both full electric (up to 15m) and hybrid (up to 28m) booms in our fleet.

## Scissor Lifts

We offer a wide range of electric scissor lifts for use both indoor and outside. They offer a zero emission, low noise solution to working safely at height.

We also offer rough terrain hybrid scissor lifts, with a working height of over 11m. Suitable for outdoor use.

And we've recently introduced stage v compliant scissor lifts to our fleet, with working heights of up to 22m



# Tools

A wide range of battery powered tools have long been available and we offer these as standard in our tool hire fleet.

And we continue to work with world leading manufacturers including Altrad Belle, Hilti, JCB, Karcher, Makita, Paslode, Stihl and Wacker Neuson safest, most innovative and eco-friendly range of tools currently available.

Our range of battery and cordless tools include:

- Angle Grinders
- Circular Saws
- Cordless Sanders
- Drills Hammer
- Drills
- Impact Drivers
- Impact Wrenches
- Grinders
- Jigsaws
- Nail Guns
- Planers
- Re-bar Cutters
- Reciprocating Saws
- Wood Planers
- Battery Powered Rammers



## Rail Tools

We also offer a range of battery powered tools in our specialist Rail fleet, certified for use in the UK Rail industry, these include:

- Portable Hydraulic Pumps
- Robel Vertical Tampers
- Robel Rail Grinders
- Impact Wrenches
- Rail Saws
- Rail Drills
- Sleeper Drills
- And the new THR2 Lightweight Rail Tensioner from Geismar

**FOR MORE INFORMATION ON OUR SPECIALIST RAIL EQUIPMENT CONTACT OUR NATIONAL DESK ON 01302 365637**

Battery Powered Vertical Tamper

# Further Reducing & Monitoring Your Environmental Impact

We offer a wide range of equipment that can help you monitor and report on the impact your site or event is having on the environment, as well as other innovative solutions that can help you work more sustainably and reduce your impact on our planet.

## Trakway Systems

Our Trakway systems can be laid onto most surfaces to allow safe access to sites and events whilst protecting the ground beneath it from excess traffic and footfall.

Trakway can be used to access fields and sites that are usually inaccessible to vehicles, plant machinery or pedestrians.

- Environmentally sustainable temporary access solution
- Made from recycled aluminum, plastic and timber
- Can be re-used for future projects
- Allows sites to return to their natural state once de-rig has taken place
- Ideal for use on sites of Special Scientific Interest (SSI)



## Storm Fence

Storm Fence is a no-dig, self-supporting system that is 100mph wind-resistant.

Unlike traditional mesh fence, storm fence is virtually breach-proof and is tested to destruction by the Metropolitan Police.

- Can be erected without disturbing the underlying ground
- Unique ballast system creates a secure perimeter
- Resistant to high winds
- Fast and easy to erect and recover
- Anti-climb with spiked tops



## Acoustic Barriers

Our acoustic barriers are excellent for general noise control, with a BS EN rating of 28.2dB.

They help minimise noise from sites, ensuring minimal disturbance for local residents.

- Designed to fit a 3.5m temporary fence panel
- Patented velcro side connectors create seamless noise protection
- Eyelets allow easy suspension from site fencing, scaffolding and hoardings
- Easily folded for transport and storage
- Panels can be branded



## Reusable Formwork Systems

Our Formwork and Falsework team offer several solutions that are proven to reduce environmental impact due to the nature of the Alkus plastic face.

The Mammut 350, EcoAs and MEVAdec are all supplied with the Alkus formface which, due to their longevity are one of the most economical solutions for concrete construction by enabling up to thirty times more uses than most plywood panels.



## Solar AI CCTV Tower

We offer various solar CCTV towers with remote monitoring. Ideal for use in remote areas, or those without a power source to monitor movements on site.

Incorporating 'deep learning' AI detection, the system learns the normal patterns of activity on sites to help identify anything unusual or untoward. It is able to distinguish between animals, vehicles, people or just debris blowing round site.

- Fully solar powered with recording available 24/7
- 360° detection area of 50 metres
- 4G antenna
- 24/7 access to live or recorded images for monitoring or review. Typically 30 days storage
- Multiple pre-recorded audio announcements, scheduled to play at regular intervals to remind visitors and staff on site about PPE, social distancing and specific site hazards
- Two way audio that allows you to speak to staff or visitors on site from wherever you are
- Vehicle access management via ANPR (Automatic Number Plate Recognition)
- 6 metre rapid deployment telescopic mast



## Environmental Monitoring System Casella Guardian 2 Site Boundary Monitor

The Casella Guardian 2 unit is specifically designed to allow remote online monitoring of noise, dust and vibration on site.

It can be used to ensure that any site emissions are recorded in order to meet environmental legislation.

- All-round instrument for environmental surveying on site
- Online integration allows real-time reporting and monitoring, with the option of automated notifications via text or email
- Ideal for construction noise monitoring or environmental dust measurement
- Suitable for use on a range of sites including construction, demolition, landfill, quarrying, mining and waste plants
- Both wall and pole mountable for long-term usage
- Can be powered via mains, battery or solar power



## iMETOS 3.3 4G Environmental Monitoring Station

The Solar powered environmental monitoring system is designed to be used in remote locations and supplied with an inbuilt solar panel and battery system.

With ever-changing climate conditions, these units are becoming increasingly popular and are commonly used in and around flood plains, rivers and reservoirs. The system can be tailored to meet your needs and offers configurations for monitoring flood warnings, real-time pH monitoring, wind speed & direction, frost warning, tipping bucket rain gauge, temperature & humidity, water levels and embankment stability through soil moisture.



Casella Guardian 2 Site Boundary Monitor



## E-Bikes

Our E-Bikes offer the perfect eco-friendly way to get from A-B on large sites and events with suitable flooring or ground conditions.

The Burlington Bikes are fitted with a 250 watt SpinTech™ motor, have a choice of 5 speed settings, with a max 15.5mph.

- 18 Inch frame (adjustable seat and handle bars)
- 23.7 kg (with battery)
- 8 Speed Shimano gears
- 3-4 hour charge time
- Front and rear LED lights
- Average 30 power assisted miles from one charge



## Cargo Bikes

A zero emission solution to moving small goods (up to 150kg payload).

Our Cargo Bikes offer up to 40 miles range from a single charge with plenty of dedicated and secure storage space for tools and other small items they offer an alternative and often greener solution to moving goods around a site, large complex or event with suitable road structure.

## Electric Tracked Carrier

The Tracked Carrier is a heavy duty, zero emission, remote controlled carrier allowing up to 1200kg of weight on ground level with an adjustable and expandable platform.



## Solar Tool Charging Station

Solar Tool Charging Stations provide a cable free, greener solution to charging battery powered tools and equipment on site.

The unit is fitted with solar panels on the roof, to harvest energy from the sun. The solar energy is then stored in the four on board batteries, providing power when needed to charge your tools. The unit is available with up to 36 individual lockers, all fitted with standard plug and USB port.

For a back-up fuel source, we can supply either a 3kVA generator (HVO compatible), giving you uninterrupted power on site, with no external cables. Our charge pods are also fitted with on board telemetry.



## Efuze I-Act (PE Pipe Welder)

The EFuze I-ACT is the world's first battery powered PE pipe welding unit that can be used all day, every day.

Specially designed for the Utilities sector EFuze is compact and highly portable. It can be fully charged in just one hour and deliver upto 200 welds from a single charge.

- Net Zero - Helps to achieve net zero by reducing carbon emissions of the welding process by 98%
- Charging on the go - The equipment can be charged from the van auxiliary 12 volt outlet or from a van-mounted inverter while driving between job sites as it only takes 60 minutes to charge from flat to full
- Silent Operation - The average generator produces 99dB. The EFuze I-ACT battery powered machine reduces operating noise by 100%

# Solar & Battery Powered Traffic Management Solutions

## VMS

When it comes to managing traffic and keeping everyone informed, our VMS (Variable Message Signs) are the perfect solution.

Designed with visibility, usability, and adaptability in mind, our VMS allows you to efficiently control traffic, provide real-time updates to your audience, and display important information.

- Fully programmable and remotely controlled for maximum convenience.
- Requires minimal on-site presence, saving you time and resources.
- Equipped with LED screens featuring the latest eco-friendly battery and solar charging technology.
- Highly visible and easy to read displays for clear communication.
- Real-time updates on traffic, parking, and event information to keep everyone informed.
- Customisable displays for event schedules and sponsor messaging.
- Built to withstand any weather and terrain conditions.
- 24/7 technical support and on-site assistance for peace of mind.

## Battery Powered Traffic Lights

These eco-friendly lights operate silently, reducing noise pollution and creating a safer and more comfortable environment for both road users and pedestrians.

Available in 2, 3, and 4-way configurations, they offer flexibility and ease of use for traffic management solutions.

Our advanced radio-controlled traffic lights ensure synchronised operations across multiple units, ensuring smooth traffic flow and minimising delays. What's more, our traffic lights feature integrated cameras for live traffic monitoring.

Stay informed about real-time traffic conditions and gain valuable insights to make informed decisions. With enhanced safety and valuable data at your fingertips, our lights empower you to manage traffic effectively and efficiently.





# Telemetry & BIM

## Technologies to Help You Be More Sustainable

Our market-leading technology can help you improve efficiency, make cost savings and reduce your carbon footprint. Our vast BIM library allows you to build a virtual model of your project.

Helping you create the most energy-efficient layout and identify where ultra-low carbon and zero carbon solutions can be deployed. You can download digital products from our BIM library: [www.sunbeltrentals.co.uk/bim/](http://www.sunbeltrentals.co.uk/bim/)

Our State-of-the-art telematics (available on a wide range of plant, power and powered access equipment) provides instant access to live data from individual machines helping you make better decisions where you can view fuel usage & CO2 emissions, including tracking utilisation and idle time, and safety alters.

Whilst Access Control is available across our Powered Access fleet. It increases safety and reduces the risk of misuse and theft as users need to be registered with a card and code to operate equipment. If you'd like to activate this feature on your access equipment speak to your customer service advisor for more information.

Our secure customer portal, Command Centre, places all the data you need to manage your rental equipment at your fingertips, 24/7, 365 days a year. Including social value scores that enable you to measure performance against your sustainability goals.

You can view or download reports via Command Centre accessible through Sunbelt Rentals website: [www.sunbeltrentals.co.uk/solutions/about-command-centre](http://www.sunbeltrentals.co.uk/solutions/about-command-centre)

# Sustainable & Recycled Equipment for Sale

Did you know you can purchase thousands of consumable items and a huge range of equipment from our Product Sales Team?

Whether you're looking for PPE made from recycled materials, battery powered tools, HVO fuel or road signs made from recycled plastics, the team have it covered! All available with fast delivery.

With a dedicated website and sales support desk they're here to support you, whatever the ask.

**PRODUCT SALES**

**0330 175 9558**

[Sunbelt Rentals - Sales](#)





For more information contact our Customer Service Team on  
**0330 4331766** or email [enquiries@sunbeltrentals.co.uk](mailto:enquiries@sunbeltrentals.co.uk)